

A CONNOISSEUR'S STUDIO
THE CISSY AND ROBERT TANG COLLECTION
OF CHINESE CLASSICAL FURNITURE

明窗淨几

鄧氏伉儷藏中國古典家具

Hong Kong, 30 May 2023 | 香港 2023 年 5 月 30 日



CHRISTIE'S 佳士得



A CONNOISSEUR'S STUDIO
THE CISSY AND ROBERT TANG COLLECTION OF
CHINESE CLASSICAL FURNITURE

明窗淨几

鄧氏伉儷藏中國古典家具

Hong Kong, 30 May 2023 | 香港 2023 年 5 月 30 日

CHRISTIE'S 佳士得





SPECIALISTS AND SERVICES FOR THIS AUCTION

SPECIALISTS & LIAISON



Pola Antebi



Chi Fan Tsang



Marco Almeida



Ruben Lien



Liang-Lin Chen



Sherese Tong



Timothy Lai



Audrey Lee



Yunhan Sun



Dai Dai



Felix Pei



Masahiko Kuze

CHINESE CERAMICS AND WORKS OF ART

HONG KONG

Pola Antebi,
International Director
Tel: +852 2978 9950
Chi Fan Tsang,
International Director
Tel: +852 2978 9954
Marco Almeida,
Specialist Head of Department
& Head of Private Sales
Tel: +852 2978 6810
Liang-Lin Chen,
Specialist Head of Sale
Tel: +852 2978 6725
Timothy Lai,
Associate Specialist
Tel: +852 2978 9943
Audrey Lee,
Associate Specialist
Tel: +852 2978 6951
Yunhan Sun,
Junior Specialist
Tel: +852 2978 6863
Fax: +852 2973 0521

BEIJING

Dai Dai, Senior Specialist
Felix Pei, Senior Specialist
Tel: +86 (0) 10 8583 1766
Fax: +86 (0) 10 8572 7901

SHANGHAI

Sherese Tong,
Senior Specialist
Tel: +86 (0) 21 2226 1512
Fax: +86 (0) 21 6355 1767

TAIPEI

Ruben Lien,
Senior Specialist
Tel: +886 2 2322 0010
Fax: +886 2 2736 4856

TOKYO

Masahiko Kuze,
Associate Vice President
Tel: +81 362 671 787

SERVICES

WRITTEN AND TELEPHONE BIDS & CHRISTIE'S LIVE

Tel: +852 2978 9910
Email: bidsasia@christies.com

PADDLE REGISTRATION

Tel: +852 2760 1766
Email:
registrationasia@christies.com

AUCTION RESULTS

HK: +852 2760 1766
UK: +44 (0)20 7627 2707
US: +1 212 703 8080
Internet: www.christies.com

CATALOGUES ONLINE

Lotfinder®
Internet: www.christies.com

SALE CO-ORDINATORS

Yvonne Jiang
YvonneJiang@christies.com
Tel: +852 2978 9955
Calista Cheung
CalistaCheung@christies.com
Tel: +852 2978 6734
Natasha Cheung
NatashaCheung@christies.com
Tel: +852 2978 6810
Fax: +852 2973 0521

GLOBAL MANAGING DIRECTOR

Heidi Yang
Tel: +852 2978 6804
Fax: +852 2525 5398

REGIONAL MANAGING DIRECTOR

Nicole Wright
Tel: +852 2978 9952
Fax: +852 2525 8157

HEAD OF SALE MANAGEMENT

Samantha Yuen
Tel: +852 2978 6703
Fax: +852 2973 0521

CLIENT SERVICES

Tel: +852 2760 1766
Email: infoasia@christies.com

POST-SALE SERVICES

Tel: +852 2760 1766
Email:
postsaleasia@christies.com

www.christies.com

EMAIL

For general enquiries about this auction,
emails should be addressed to the Sale Co-ordinator(s).

A CONNOISSEUR'S STUDIO – THE CISSY AND ROBERT TANG COLLECTION OF CHINESE CLASSICAL FURNITURE

明窗淨几 – 鄧氏伉儷藏中國古典家具

TUESDAY 30 MAY 2023 · 2023年5月30日(星期二)

AUCTION CODE AND NUMBER

拍賣名稱及編號

In sending Written and Telephone bids or making enquiries, this sale should be referred to as **TANG-22014**.

在遞交書面和電話競投表格或查詢拍賣詳情時，請註明拍賣名稱及編號為**鄧氏-22014**。

CONDITIONS OF SALE · BUYING AT CHRISTIE'S 業務規定 · 買方須知

The sale for each lot is subject to the Condition of Sale, Important Notices and Explanation of Cataloguing Practice, which are set out on christies.com. Please note that the symbols and cataloguing for some lots may change before the auction. For the most up to date sale information for a lot, please see the full lot description, which can be accessed through the sale landing page on christies.com.

每件拍賣品的銷售均受 christies.com 上列出的業務規定、重要通知及目錄編列方法之說明的約束。請注意，某些拍賣品的符號和目錄可能會在拍賣前發生變化。有關拍賣品的最新拍賣信息，請參閱 christies.com 上的拍賣登陸頁面中的完整拍賣品描述。

ENQUIRIES · 查詢

HK 香港: +852 2760 1766

UK 英國: +44 (0)20 7627 2707

US 美國: +1 212 703 8080



Scan to view
auction details

掃描以瀏覽拍賣詳情



Scan QR to access
Christie's WeChat
mini program.

掃描二維碼或微信搜索
“佳士得”小程序，
查閱全球拍賣資訊。



Follow us
關注佳士得
ChristiesAsia

CHRISTIE'S  LIVE

Bid live in Christie's salerooms worldwide

christies.com

AUCTION · 拍賣

Tuesday 30 May · 5月30日(星期二)

10.30am (Lots 2701-2725) · 上午10.30 (拍賣品編號2701-2725)

Location: Hall 3D-3G, Hong Kong Convention and Exhibition Centre,
No.1 Harbour Road, Wanchai, Hong Kong

地點: 香港灣仔港灣道1號香港會議展覽中心展覽廳3D-3G

Tel 電話: +852 2760 1766 · Fax 傳真: +852 2760 1767

VIEWING · 預展

HONG KONG, Hong Kong Convention and Exhibition Centre

香港, 香港會議展覽中心

Thursday – Monday, 25 – 29 May · 5月25日至29日(星期四至一)

10.30am – 6.30pm

AUCTIONEER · 拍賣官

Liang-Lin Chen

Important notice in respect of lots numbered 2701, 2715, 2716, 2717, 2718, and 2723

Please note, these lots, contain a type of *Dalbergia* wood that is subject to CITES export/import restrictions. However, as each lot (or each individual item in the lot) the weight of this type of *Dalbergia* does not exceed 10 kg, starting from 1 May 2021, CITES license is no longer required for importing the lot (or the individual item in the lot) into Hong Kong. Before you decide to bid, please check whether your destination country permits import without CITES license. If CITES license is required, we will make the lot available for your collection in Hong Kong. We will not cancel your purchase due to any CITES restrictions impacting the import of the lot to the destination country.

有關拍賣品編號 2701, 2715, 2716, 2717, 2718, 2723 的重要通知

請注意所列拍賣品包含一種黃檀屬的木。所有含有黃檀屬木的拍賣品受 CITES 出/入口管制。但由於每件拍賣品(或拍賣品內的個別物品)該類黃檀木的重量不超過 10 公斤, 由 2021 年 5 月 1 日起, 該拍賣品(或拍賣品內的個別物品)分別進口香港不再需要 CITES 許可證。在您決定競投之前, 閣下應確定目的地國家是否允許在沒有 CITES 許可證的情況下入口。如果目的地需要 CITES 許可證, 您可選擇在香港提取拍賣品。佳士得不會因為目的地國家對拍賣品有 CITES 規定限制出口該國而取消您的交易。

Important notice in respect of lots numbered 2703-2714, 2719, 2720, and 2724

Please note these lots incorporate material from endangered species which could result in export restrictions. You should check the relevant customs laws and regulations before bidding on this lot if you plan to import the lot into another country. Please refer to Christie's Conditions of Sale.

有關拍賣品編號 2703 至 2714, 2719, 2720 及 2724 的重要通知

請注意所列拍賣品含有瀕危物種的材料, 可能受出口限制。若您有意將本拍賣品進口至其他國家, 您須於競投本拍賣品前瞭解有關海關法例和規定。請參閱佳士得業務規定。

Please note that descriptions of Lots in this catalogue do not include references to conditions. Condition reports are available on request – please refer to the Important Notices at the back of the catalogue for further information.

敬請注意本拍賣目錄中沒有包括拍品狀況說明, 若有需要, 請向佳士得公司索取, 本公司可以提供此報告。另外, 敬請留意閱讀拍賣目錄背頁之《重要通告及目錄編列方法之說明》。

We may convert and display in our catalogues the HK\$ estimates in US\$. This is for the convenience of our clients only and is not binding in any way. The rate of exchange is fixed at the latest practical date prior to the printing of the catalogue and may change by the time of the sale. 我們可將港元估價轉換成美元並於目錄中顯示。這僅為方便我們的客戶而不具有任何法律約束力。該貨幣兌換率是根據最貼近日錄付印時的兌換率設定, 所以可能與拍賣當日兌換率有差別。

CHRISTIE'S 佳士得

The Cissy and Robert Tang Collection of Chinese Classical Furniture

Prior to becoming a judge in 2004 and retiring from the Hong Kong Court of Final Appeal in 2018, Justice Robert Tang was a barrister and then Queen's Counsel in the 1980s and 1990s. During those years, he regularly took breaks from his heavy workload in order to visit antique shops near his chambers in Central, Hong Kong. He recalls that this was a daily activity, and he often stopped to see the same dealer more than once a day, so quick was the turnover of items for sale during this period.

Robert Tang collected in several fields that were of particular interest to him. He selected works based on his intellectual curiosity, rather than having a view to investment or resale. During those two decades, he formed collections of Chinese archaic jades, early bronzes, Song ceramics, Buddhist sculpture, modern paintings and classical furniture. He acquired his furniture to live with on a daily basis. Justice Tang explains: 'As a collector, I have purchased pieces I found attractive, that appealed to me' ... 'I made decisions quickly, almost immediately, because, if I waited, there was a strong possibility the piece would no longer be available the following day'. He notes: 'I did not have a formal collecting philosophy. I bought what I could afford, every piece of furniture had to fit into my home, or office, and had to have a function.' He further explains: '... and when my home was full, in the early 2000s, I stopped'. The furniture was acquired from trusted dealers and friends such as Robert Ellsworth, Cola Ma and Ho Chung at a time when there was a steady flow of *huanghuali* furniture from China. There were several pieces he especially admired in Ellsworth's Hong Kong flat at the New World Apartments, and while they were not available to purchase at the time, Ellsworth later made good his promise to sell those pieces to Justice Tang when the former left Hong Kong 20 years later.

The pair of intricately carved *huanghuali* chairs, one with a *qilin* carved to the backrest, the other with two mythical beasts, **lot 2705**, were purchased from Ellsworth who initially included them in the exhibition *Circa 1492: Art in the Age of Exploration* in 1991 in the National Gallery of Art, at which time they were dated to the middle-Ming dynasty. Later scholarship redated these chairs to 17th century. Interestingly, a further pair of chairs from this series, each with a different animal carved in openwork to the backrest, are now in a private Asian collection. They were once in the collection of Gangolf Geis, and were sold at Christie's in New York in 2003. To illustrate the fact that these chairs, and, indeed, all the furniture in the Tang collection, were used by the entire family, Judge Tang recounts how shocked curators from an American Museum were when they visited his home and saw that he had mounted a basketball hoop on the crest rail of one of the pair of chairs for his young son.

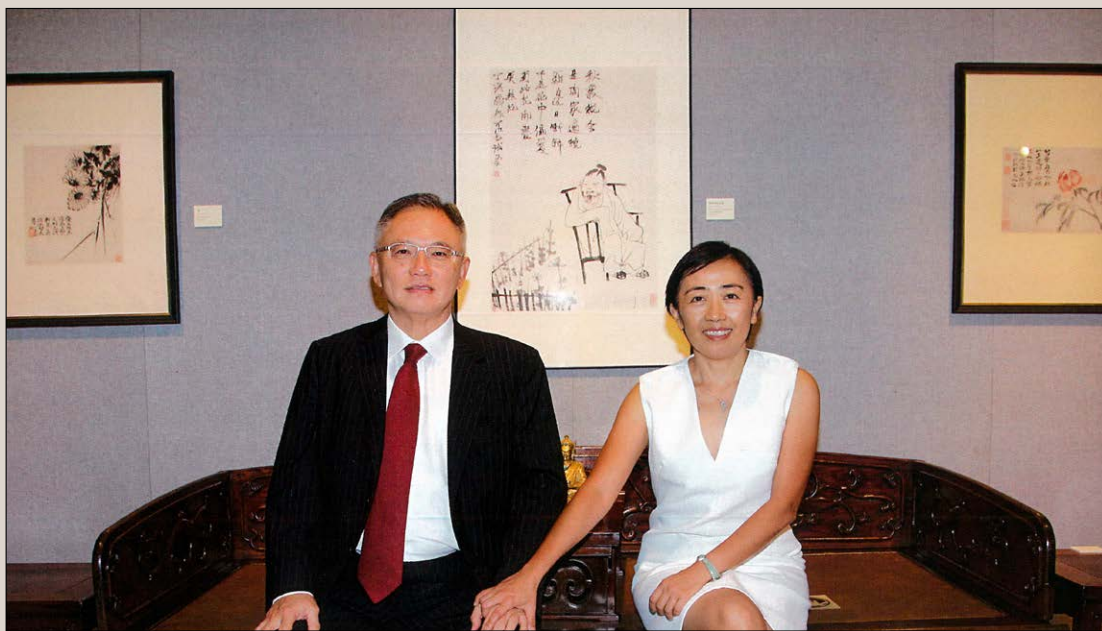
The elegant bookcases in the collection, **lot 2708**, have been widely admired and included in many exhibitions and publications. The first bookcase was purchased directly from Cola Ma. Later, Justice Tang had the opportunity, through his dealer Jim Lally, to purchase the other when it was offered as part of the Dr. SY Yip auction (which he had acquired from Grace Wu) at Christie's in 2002. As a reunited pair, these bookcases are extremely rare.

From amongst all his pieces of furniture, Justice Tang has selected his half-moon table as his favourite piece, **lot 2709**. The rare form with a semi-circular top and pure fluid lines is decorated only on the dragon-shaped spandrels that support the cabriole legs. This table used to grace the entrance hall of his home.

A longtime member of the Min Chiu society, and its Chairman from 2007-2009, as well as a member of the Hong Kong Palace Museum board, Justice Tang, along with his wife Cissy, has been in a position to discuss aspects of his collecting with likeminded collectors and international academics – often making lifelong friendships.

As their children have now grown and live abroad, Robert and Cissy Tang are planning to downsize, and to divide their time between their home in Hong Kong and overseas travels. They offer this collection for sale in the hope that the pieces will enter new homes, and help build new memories for others. Justice Tang explains: 'I have never grown tired of the pieces in my collection; each time I look at an object, I see what initially attracted me to it. However, the time has now come to pass on some of these pieces to the next generation of collectors.'





Robert and Cissy Tang 鄧國楨、林勁思伉儷

鄧氏伉儷藏中國古典家具

鄧國楨法官於2004年加入法官行列，2018年退休之際任職香港終審法院常任法官。此前，他從事大律師業務，八、九十年代任御用大律師。在此期間，即便公務繁忙，他仍不時撥冗到香港中環其律師事務所附近的古董店逛一逛。回首從前，他說這仿如日課，有時甚至一天內多次造訪同一個古董商，當年古玩行情之瞬息萬變，於此可見一斑。

對於收藏一道，鄧國楨法官興趣和涉獵甚廣。入其法眼者，俱屬明心見性之物，而非用於投資或轉售。他耗費二十年心血，捫摭了一批中國古玉、早期青銅、宋代陶瓷、佛教雕塑、現代繪畫及古典家具珍藏。他收藏的家具，無不與之朝夕相伴。他解釋道：「作為藏家，我購藏的皆是賞心悅目、愛不釋手之作。……取捨之間，我從不拖沓，甚或一念之間已有定奪，因稍有躊躇，心儀之物隔天或已被人捧走。」他還提到：「我並無正式的收藏理念。我只是在能力範圍內從事購藏，而每件家具在我家中或辦公室皆各得其所、各司其職。」據他所言：「……千禧之初，家中再無多餘空間，我的收藏之旅亦告一段落。」鄧氏典藏家具均來自信譽卓著的古董商或友儕，如安思遠 (Robert Ellsworth)、馬可樂與何祥，而當年來自內地的黃花梨家具數目依然可觀。旅港期間，安思遠客居新世界酒店式公寓，鄧氏對其家中若干藏品青睞有加，惟當時無緣納藏，所幸安氏二十年後離港之際，終踐諾將之售予鄧氏。

該批安氏舊藏中，有一對雕工精良的黃花梨四出頭官帽椅，一者靠背板透雕麒麟，一者飾瑞獸兩隻 (拍品編號2705)，兩者曾外借予1991年舉行的《Circa 1492: Art in the Age of Exploration》展覽，而當年的斷代為明代中葉，但新的學術研究將之重訂為十七世紀製品。有意思的是，這一系列座椅之中，尚有一對亞洲

私人珍藏傳世之作，其靠背板各透雕一動物圖案。二椅為葛耿孚 (Gangolf Geis) 舊藏，2003年經紐約佳士得拍出。據鄧氏憶述，曾有一家美國博物館的館員登門拜訪，後者看到他為幼子在一把座椅搭腦添設的籃球框時，均驚訝不已，可見其官帽椅 (乃至鄧氏所有珍藏傢具) 確屬家常用具。

鄧氏珍藏中尚有一對雅潔清貴的黃花梨三層壺門圈口架格 (拍品編號2707)，這對作品備受好評，曾多次亮相於各大展覽和著錄。其中一櫃直接購自馬可樂；其後機緣巧合，鄧氏再透過古董商藍理捷 (Jim Lally)，在2002年佳士得拍場上投得配對之作，此乃葉承耀醫生舊藏 (早年向嘉木堂購入)。歲月流轉，這對久別重逢之作可謂彌足珍貴。

芸芸家具之中，鄧國楨法官尤為鍾情的是黃花梨月牙桌 (拍品編號2708)。它造型獨特，几面半圓，線條簡潔靈動，僅於彎足角牙雕飾龍紋。這件藏品曾是鄧宅玄關之擺設。

鄧國楨法官是敏求精舍的資深成員，2007至2009年期間出任該會主席，此外更是香港故宮文化博物館董事局成員。於收藏一道，他與夫人林勁思常與藏家同好與海內外學者交流切磋，並由此結交了不少終生摯友。

鑑於兒女已在海外安家立業，鄧氏伉儷遂立意一切從簡，閒居香江之餘，常聯袂雲遊四海。他倆希望為這批藏品另覓安身之所，為有緣之人締造新的回憶。誠如鄧氏所言：「在我眼中，這批珍藏歷久彌新；摩挲細賞之際，當年傾心之故依然不變。緣起緣滅，薪火相傳，是時候該把它們交給新一代的藏家了。」



~2701

A HUANGHUALI RECESSED TRESTLE-LEG TABLE STAND

QING DYNASTY (1644-1911)

The top is set within a board frames with everted ends above a beaded apron and cloud-form spandrels, set on trestle legs carved in openwork with *ruyi* heads.

8 ½ in. (21.5 cm.) high, 26 in. (66 cm.) wide,
10 7/16 in. (26.5 cm.) deep

HK\$80,000-120,000
US\$11,000-15,000

PROVENANCE

M&C Gallery, Hong Kong

Compare to a similar *huanghuali* stand from the collection of Robert Hatfield Ellsworth, sold at Christie's New York, 18 March 2015, lot 128.

清 黃花梨翹頭案上案

來源

乾坤堂，香港

比較安思遠藏一例，拍賣於紐約佳士得，2015年3月18日，拍品128號。





2702

A RARE *ZITAN* CIRCULAR
'DREAMSTONE' INSET TABLE
SCREEN AND STAND

QING DYNASTY, YONGZHENG-QIANLONG PERIOD
(1723-1795)

The stand is made in sections with a solid platform base with scroll form feet, the semi-circular arching section supporting a detachable circular frame with marble inset. The wood is of deep purplish brown tone.

29 1/8 in. (74 cm.) high, 17 5/16 in. (44 cm.) wide,
7 1/2 in. (19 cm.) wide.

HK\$300,000-500,000
US\$39,000-64,000

PROVENANCE

C.L. Ma, Hong Kong

清雍正/乾隆 紫檀嵌大理石
圓座屏

來源

馬可樂，香港





~2703

A HIGH-WAISTED
HUANGHUALI SIDE TABLE
WITH 'GIANT'S ARM' BRACES

17TH CENTURY

The single-panel top is set within wide rectangular frame above a narrow waist, with 'S' shaped 'giant's arm' braces extending from the inside of each leg to the underside of the table, terminating at the transverse stretcher, all supported on legs of square section terminating in hoof feet.

31 ¼ in. (79.5 cm.) high, 43 ½ in. (110.5 cm.) wide,
21 ⅝ in. (55 cm.) deep

HK\$1,200,000-1,800,000
US\$160,000-230,000

PROVENANCE

C.L. Ma, Hong Kong

十七世紀 黃花梨高束腰霸王
棖馬蹄足條桌

來源

馬可樂，香港

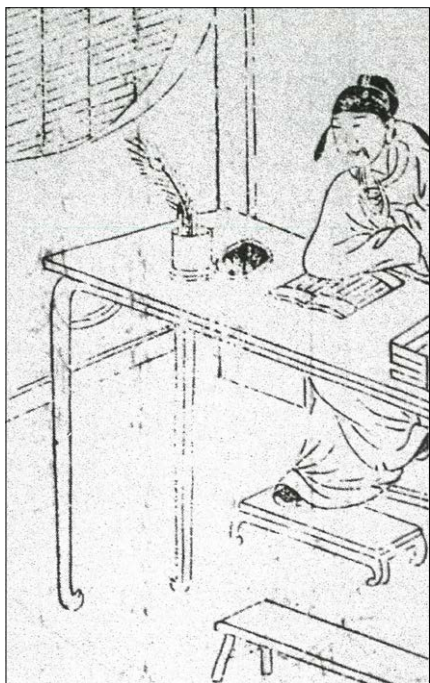




The presence of 'giant arm's braces' substitute the need for the more commonly seen humpback stretchers. Compare to a similar table formerly in the Grace Wu's collection, illustrated in *Sublime and Divine, Chinese Ming Furniture*, Hong Kong, 2014, pp.88-91, later sold at Guardian Beijing, 17 May 2014, lot 4413.

本條桌高束腰，馬蹄足，以霸王棍替代常見的羅鍋棍，使條桌造型更為簡練空靈。

比較一同有霸王棍的黃花梨條桌，見《器美神完：明式家具精萃》，嘉木堂，香港，2014年，頁88-91，後拍賣於北京嘉德，2014年5月17日，拍品4413號。



Detail from Ming dynasty woodblock print illustration to the *Classic of Lu Ban (Lu Ban jing)*
明代《魯班經》木刻版畫插圖





~2704

A HUANGHUALI SQUARE-CORNER RECTANGULAR CABINET AND STAND

QING DYNASTY, 18TH CENTURY

The rectangular frame is set to the hinged doors, and sides, with single board floating panels unadorned except for the central raised rectangular feature highlighting the wood grain with a further two similar panels to the reverse. The doors, open to reveal the interior with three shelves, with the middle section constituting a shelf and two drawers. The cabinet is elegantly raised on the matching stand with square legs, constructed with two drawers above carved *ruyi* aprons and a shelf below.

71 in. (180.5 cm.) high overall, 38 ¼ in. (97 cm.) wide, 15 15/16 in. (40.5 cm.) deep

HK\$1,500,000-2,500,000
US\$200,000-320,000

PROVENANCE

C.L. Ma, Hong Kong

LITERATURE

Arts of Asia, March-April 1991, C.L. Ma Antiques advertisement

清十八世紀 黃花梨方角櫃連底座

來源

馬可樂，香港

出版

《Arts of Asia》，1991年3-4月，馬可樂廣告頁







Back view
背面



Side view
側面









~2705

A PAIR OF IMPORTANT
AND EXTREMELY RARE
HUANGHUALI YOKE-
BACK ARMCHAIRS,
SICHUTOUGUANMAOYI

17TH CENTURY

The yoke-back armchairs are constructed of fine *huanghuali*, each 'official's hat' top rail with strongly swept-back ends supported on round corner posts which continue through to the back legs. The well matched backsplats are flanked at the sides by openwork *ruyi*-scroll flanges, pierced and exquisitely carved in deep and layered technique from both sides with a *ruyi*-shaped cartouche enclosing auspicious emblems surrounding a *qilin* on one and two mythical animals on the other. The out-srolled arms supported on sinuous tapering stiles and curved front posts with beaded cloud spandrels continue through the rectangular frame of the soft mat seat to form the front legs, which joined in front by beaded scrolling aprons and long flange spandrels carved with dragons, lotus buds, *ruyi* and clouds, with similarly carved aprons and spandrels on all four sides, and with a shaped footrest and stepped stretchers, each with a curvilinear apron carved with dragon heads or leafy tendrils.

47 in. (119.5 cm.) high, 24 ¹³/₁₆ in. (63 cm.) wide,
21 ⁷/₁₆ in. (54.5 cm.) deep (2)

HK\$8,000,000-12,000,000
US\$1,100,000-1,500,000

PROVENANCE

Eastern Pacific Co. (Hei Hung Lu), Hong Kong
Giesle Croes, Brussels, 1986/87
Robert Hatfield Ellsworth, Hong Kong, 1989

EXHIBITED

Circa 1492: Art in the Age of Exploration, National Gallery of Art, Washington D.C., 1991, cat.pp.485-486, no.345
Best of the Best: An Exhibition of Ming Furniture from Private Collections, Grace Wu Bruce, Hong Kong, 1994
The Radiant Ming, 1368-1644 through the Min Chiu Society Collection, Hong Kong, 2015, cat.pp. 292-293, no. 224

LITERATURE

B. Flynn, 'Chinese Furniture in Two Columbian Exhibitions: 1893 and 1992', *Journal of the Classical Chinese Furniture Society*, Spring 1993, pp.48-51, fig.4
C. Evarts, 'Best of the Best' An Exhibition of Ming Furniture from Private Collections, *Arts of Asia*, May-June 1995, pp. 135-141, no. 5
Chinese Jades from the Cissy and Robert Tang Collection, Hong Kong, 2015, p. 12, fig.3

十七世紀 黃花梨四出頭
官帽椅一對

來源

東泰公司 (黑洪祿), 香港
Giesle Croes, 布魯塞爾, 1986/87年
安思遠舊藏, 香港

展覽

《Circa 1492: Art in the Age of Exploration》, 華盛頓, 1991年, 圖錄485-486頁, 圖版345號
《Best of the Best: An Exhibition of Ming Furniture from Private Collections》, 嘉木堂, 香港, 1994年
《日昇月騰: 從敏求精舍藏品看明代》, 香港, 2015年, 圖錄292-293頁, 圖版224號

出版

Flynn, 《Chinese Furniture in Two Columbian Exhibitions: 1893 and 1992》, JCCFS, 1993年, 春季, 48-51頁, 圖版4號
柯惕思, 《Best of the Best: An Exhibition of Ming Furniture from Private Collections》, *Arts of Asia*, 1995年5-6月, 135-141頁, 圖版5號
《Chinese Jades from the Cissy and Robert Tang Collection》, 香港, 2015年, 12頁, 圖版3號





The name *guanmaoyi* or 'official's hat-shaped chair is derived from its resemblance to the winged hat that was part of the formal attire of the Ming officials. They were regarded as high chairs and retained a connotation of status and authority associated with the elite gentry in Chinese society. The classical text *Lu Ban jing* [Manuscript of Lu Ban], a 15th-century carpenter's manual, gives specifications for these chairs and describes the joinery as the embodiment and fine example of Chinese furniture.

The present chairs are distinguished by their elaborate and refined carving, particularly in the most unusual, pierced medallion in the splat. Invariably pairs, or sets, of chairs have uniform decoration, identical, within the given parameters of hand carving, from chair to chair.

These chairs, and another two appear to come from the same set, the pair from the Gangolf Geis collection sold at Christie's New York, 18 September 2003, lot 38 (fig.1). The Geis chairs have different animals carved to the back rest, a lion on one, and a spotted deer on the other.

It has been suggested by Curtis Evarts in his foreword in the Christie's catalogue for the Gangolf Geis Collection auction in 2003 that this decoration might relate to rank badges or some sort of hierarchical seating arrangement amongst family or guests. It is also most unusual to find such elaborate carved decoration to the aprons beneath the seat and beneath the foot stretcher and side and back stretchers. These elaborately carved chairs were crafted by an exceptional master carpenter.

本對四出頭官帽椅造型舒朗大氣，雕工精湛。搭腦彎弧有力，中成枕形，兩端出頭上翹。三彎背板一木雕成，其上設如意形開光，分別透雕麒麟及瑞獸兩隻於雜寶之間，兩側飾鏤雕卷草紋掛牙。後腿上截出榫納入搭腦，穿過椅盤成為腿足一木連做，前腿亦為相似作法。扶手亦三彎，中間支以三彎形上細下粗圓材連幫棍。座面下四面安起線雕螭龍紋券口牙子，前腿間施一踏腳枱，下飾壺門牙板。

官帽椅因其外觀與古代官吏所戴頂帽相似而得名。十五世紀木匠典籍《魯班經》詳細描述官帽椅製式，並稱許其榫卯結合方式為中國傢俱之典範。比較一對同本拍品似原為一組的黃花梨官帽椅，為Gangolf Geis舊藏，2003年9月18日於紐約佳士得拍賣，拍品38號（圖一）。其背板上分別雕刻獅子及梅花鹿。Curtis Evarts於2003年佳士得圖錄前序中寫道背板之上的紋飾似與官服補子相關，或與落座時家人、賓客次序關聯。



fig.1 Collection of Gangolf Geis, sold at Christie's New York, 18 September 2003, lot 38

圖一 Gangolf Geis舊藏，拍賣於紐約佳士得，2003年9月18日，拍品38號





Lot 2705 details
拍品2705細部



fig. 1 details
圖一細部

















~2706

A PAIR OF HUANGHUALI RECTANGULAR STOOLS

MING DYNASTY, LATE 16TH / EARLY 17TH CENTURY

Each has a mat seat set into a rectangular frame above plain aprons and spandrels. The whole is raised on round legs with square inner face joined by pairs of stretchers at the short sides and a single stretcher at the long sides. The underside of each seat with two transverse braces connected with a bridge-shaped piece of wood.

20 ¼ in. (51.5 cm.) high, 21 ⅞ in. (53.5 cm.) wide,
17 ¼ in. (44 cm.) wide (2)

HK\$1,200,000-1,800,000
US\$160,000-230,000

PROVENANCE

Grace Wu Bruce, Hong Kong
Chung Wah Pui, Hong Kong

EXHIBITED

*The Radiant Ming, 1368-1644 Through the Min Chiu Society
Collection*, Hong Kong, 2015, cat. pp. 288-289, no. 222

LITERATURE

Grace Wu Bruce, *Two Decades of Ming Furniture*, Beijing,
2010, p.155

明十六世紀末/十七世紀初 黃花梨長方凳一對

來源

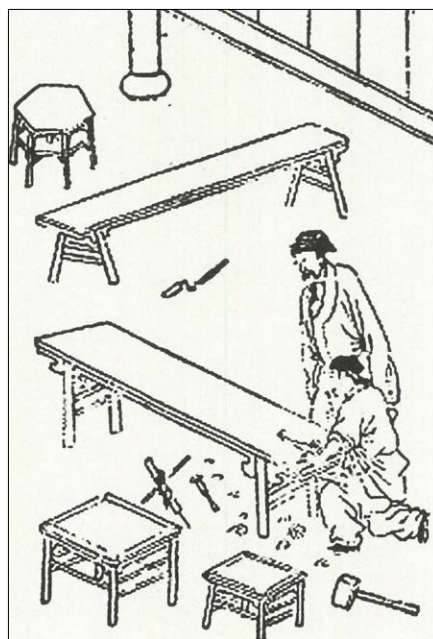
嘉木堂，香港
鐘華培，香港

展覽

《日昇月騰：從敏求精舍藏品看明代》，香港，2015年，
圖錄288-289頁，圖版222號

出版

伍嘉恩，《明式家具二十年經眼錄》，北京，2010年，155頁



Detail of Ming dynasty woodblock print illustration
to the *Classic of Lu Ban (Lu Ban jing)*
明代《魯班經》木刻版畫插圖





The current pair of stools are fashioned from thick timbers that are strong in both construction and appearance. There are two transverse braces on the underside with an additional rectangular support in the center. It is suggested by Sarah Handler in *Austere Luminosity of Chinese Classical Furniture*, Berkeley, Los Angeles and London, 2001, p.91, that the stools with this overbuilding construction feature are an early hardwood pieces copying even earlier softwood construction.

Compare to two pairs of *huanghuali* stools of the same form and also have the curved transverse braces with wood bridge on the underside, one formerly in the Museum of Classical Chinese Furniture, sold at Christie's New York, 19 September 1996, lot 15 (fig.1), the other formerly in the Wang Shixiang collection, now in the Shanghai Museum collection, see Wang Shixiang, *Mingshi jiaju zhenshang*, Hong Kong, 1985, p. 58 (fig.2).

本對長方凳素牙子起邊線，牙頭點綴小委角。足材外圓里方，同起邊線。直根正面一根，側邊兩根。整體結構簡練，風格淳樸，渾厚耐看。

比較美國加州中國古典家具博物館舊藏一對相似長方凳，後拍賣於紐約佳士得，1996年9月19日，拍品15號（圖一）。另比較上海博物館藏一對，見王世襄著《明式家具珍賞》，香港，1985年，58頁（圖二）。值得注意，兩對長方凳及本拍品凳盤背面均設兩根橫帶，並於中間以橋型木方連成一體。



fig. 1 The Museum of Classical Furniture Collection, sold at Christie's New York, 19 September 1996, lot 15

圖一 美國加州中國古典家具博物館藏品，拍賣於紐約佳士得，1996年9月19日，拍品15號



fig. 2 Collection of the Shanghai Museum

圖二 上海博物館藏品





~2707

A HUANGHUALI RECESSED-
LEG PAINTING TABLE,
PINGTOUAN

17TH CENTURY

The single panel top is set within the wide rectangular frame, above plain aprons and spandrels, the whole is supported on legs of circular section and joined by pairs of stretchers.

32 7/8 in. (83.5 cm.) high, 75 5/8 in. (192 cm.) wide,
21 1/2 in. (54.7 cm.) deep

HK\$1,200,000-1,800,000
US\$160,000-230,000

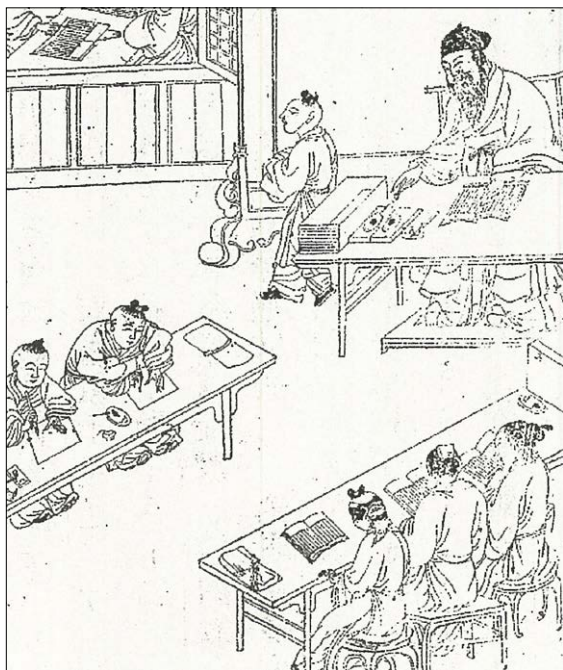
PROVENANCE

C.L. Ma, Hong Kong

十七世紀 黃花梨平頭案

來源

馬可樂，香港



Detail from Qing dynasty woodblock print
illustration detail to the *Shengyu xiangjie*
清代《聖諭像解》木刻版畫插圖







The recessed-leg table is one of the most well-known and recognizable forms in classical Chinese furniture. Tables of this elegant and restrained form trace their origins to the furniture design of the Song dynasty, and several variations on this type are known. The basic proportions were adapted to make large painting tables, smaller tables, benches and stools. Tables of the size of the present table are generally referred to as painting tables.

For a similar *huanghuali* recessed-leg table, see the 16th/17th century example illustrated by Wang Shixiang and Curtis Everts, *Masterpieces from the Museum of Classical Chinese Furniture*, Chicago, 1995, p. 114, no. 54, later sold at Christie's, New York, 19 September 1996, lot 75 (fig. 1). Everts also points out that this basic form of table has been repeatedly depicted in paintings, as well, from as early as the Song dynasty (960 - 1279). See, also, Robert D. Jacobsen and Nicholas Grindley, *Classical Chinese Furniture in the Minneapolis Institute of Arts*, Minneapolis, 1999, pp. 122-23, no. 40, for a similar painting table dated to the 17th century.

平頭案為經典之明式家具，質樸簡練，清新雋永。其設計源自古代中國建築大木梁架的造型與結構，並後續衍生出更多形製。

比較一類似十七/十八世紀黃花梨平頭案，見王世襄及柯惕思著《Masterpieces from the Museum of Classical Chinese Furniture》，芝加哥，1995年，114頁，圖版54號，後拍賣於紐約佳士得，1996年9月19日，拍品75號（圖一）。另比較十七世紀一例，見Robert D. Jacobsen及Nicholas Grindley著《Classical Chinese Furniture in the Minneapolis Institute of Arts》，明尼阿波利斯，1999年，122-123頁，圖版40號。



fig. 1 The Museum of Classical Furniture Collection, sold at Christie's New York, 19 September 1996, lot 75

圖一 美國加州中國古典家具博物館藏品，拍賣於紐約佳士得，1996年9月19日，拍品75號









~2708

A PAIR OF IMPORTANT AND
EXTREMELY RARE HUANGHUALI
BOOKSHELVES, *JLAGE*

17TH CENTURY

Each rectangular bookshelf is of pleasing proportion, the moulded, beaded square sections of the frame support three shelves, the top shelf with a high rail set with five cusped ornamental openings carved on both sides, the bottom shelf above a plain apron and short spandrels.

68 ½ in. (173.9cm.) high, 40 ¾ in. (103.3cm.) wide,
15 in. (38.5cm.) deep (2)

HK\$8,000,000-12,000,000
US\$1,100,000-1,500,000

PROVENANCE

One of the pair:
The Dr. S.Y. Yip Collection of Fine and Important Classical Chinese Furniture, Christie's New York, 20 September 2002, lot 33
The other:
C.L. Ma, Hong Kong

EXHIBITED

One of the pair:
Hong Kong Museum of Art, 1990-1991
Art Gallery, The Chinese University of Hong Kong, 20
September-24 November, 1991
Denver Art Museum, 1996-1999
Institute of Contemporary Arts, London, 18-26 November 1999

Both:
The Hong Kong Museum of Art, *In Pursuit of Antiquities: Thirty-fifth Anniversary Exhibition of the Min Chiu Society*, Hong Kong, 1995, p. 261, cat. no. 261
The Radiant Ming, 1368-1644 Through the Min Chiu Society Collection, Hong Kong, 2015, cat. pp. 282-283, no. 219

LITERATURE

One of the pair:
Selected Treasures of Chinese Art: Min Chiu Society Thirtieth Anniversary Exhibition, Hong Kong, 1990, cat. pl. 262
Grace Wu Bruce, *Dreams of Chu Tan Chamber and Romance with Huanghuali Wood: The Dr. S Y Yip Collection of Classic Chinese Furniture*, Hong Kong, 1991, pp. 108-109, no. 41
Yip Shing Yiu, 'Collecting Ming Furniture of Huang Hua-Li Wood', *Arts of Asia*, May-June 1991, p. 121, fig. 13
C. Evarts, 'Best of the Best' An Exhibition of Ming Furniture form Private Collections, *Arts of Asia*, May-June 1995, pp. 135-141, no. 8
Tian Jiaqing, 'Early Qing Furniture in a Set of Qing Dynasty Court Paintings', *Oriental Arts*, January 1998, reprinted in Chinese Furniture: *Selected Articles from Orientations 1984-1999*, p. 158, fig. 13

十七世紀 黃花梨壺門圈口
三層架格一對

來源

其一:
《The Dr. S.Y. Yip Collection of Fine and Important Classical Chinese Furniture》, 紐約佳士得, 2002年9月20日, 拍品33號
另一:
馬可樂, 香港

展覽

其一:
香港美術博物館, 1990-1991年
香港大學美術博物館, 1991年9月20-11月24日
丹佛美術館, 1996-1999年
倫敦當代藝術學院, 1999年11月18-26日

兩件:

《好古敏求: 敏求精舍三十五週年紀念展》, 香港, 1995年, 圖錄261頁, 圖版261號
《日昇月騰: 從敏求精舍藏品看明代》, 香港, 2015年, 圖錄282-283頁, 圖版219號

出版

其一:
《歷代文物萃珍: 敏求精舍三十週年紀念展》, 香港, 1990年, 圖錄圖版262號
伍嘉恩, 《Dreams of Chu Tan Chamber and Romance with Huanghuali Wood: The Dr. S Y Yip Collection of Classic Chinese Furniture》, 香港, 1991年, 108-109頁, 圖版41號
Yip Shing Yiu, 《Collecting Ming Furniture of Huang Hua-Li Wood》, *Arts of Asia*, 1991年5-6月, 121頁, 圖版13號
柯惕思, 《Best of the Best: An Exhibition of Ming Furniture form Private Collections》, *Arts of China*, 1995年5-6月, 135-141頁, 圖版8號
Tian Jiaqing, 《Early Qing Furniture in a Set of Qing Dynasty Court Paintings》, *Oriental Arts*, 1998年1月, Chinese Furniture: Selected Articles from Orientations 1984-1999重印版, 158頁, 圖版13號









Wang Shixiang in *Connoisseurship of Chinese Furniture* notes that bookcases such as these are used for both display and storage and are often called *shjia* or *shuge* both of which mean bookcase but because objects other than books were placed upon them, he refers to them as 'open shelf stands'. These open shelf stands take the form of four simple uprights with horizontal shelves the full width of the piece, sometimes, as is the case here, with a three-sided gallery that outlines a shelf called an *anquankou* (partitioned openings). Both elaborate and simple designs emanate from the Ming dynasty. When the shelves are divided and are placed at different heights and are different lengths, although their decoration may be simple, they date from the Qing dynasty. This is borne out by the famous set of paintings in the collection of the Palace Museum, Beijing, *The Twelve Beauties of the Yuanmingyuan* that date from the Kangxi period, or more specifically 1709–1723. For a comprehensive discussion of these paintings see *Early Qing Furniture in a Set of Qing Dynasty Court Paintings* by Tian Jiaqing (Orientations, January 1993).

Of the 'open shelf stands' or bookcases known, nearly all the hardwood (rather than lacquer) examples have drawers. Sarah Handler in the Winter 1993 *Journal of the Museum of Classical Chinese Furniture*, quoting from George Kates *Chinese Household Furniture*, suggests that the common term for drawers *chouti* implies that they are "pullable trays" and that they would be taken from the bookcase to the table which, of course, had no drawers.

No other pairs of 'open shelf stands' or bookcases are known although sets must have existed as Wen Zhenheng suggests in his late Ming publication *Zhang wu zhi jiao zhu* (The Treatise on Superfluous Things) that bookcases should be "7 ft high and 14 ft broad" with the often quoted advice to "avoid putting books on the bottom shelf, where they will be spoiled by damp", taken from *Chinese Furniture* by Craig Clunas.

此對架格四面平式，四足，取橫版三層。最上層背後及兩側設矮欄，欄柱間飾壺門式圈口牙子。餘下兩層四面空敞，底層正及側面裝素牙條。造型整體秀麗勻稱，空靈舒朗。

櫃架類家具，常置於書房。王世襄於《明式家具研究》中寫道此類架格除放置書籍外，亦會用來放置文玩書畫，並兼以陳設功用。









~2709

A VERY RARE *HUANGHUALI*
DEMI-LUNE TABLE,
YUEYAZHUO

QING DYNASTY, 17TH-18TH CENTURY

The semi-circular panel top is set into a broad frame with 'ice-plate' edges above a narrow waist, supported on three slender, inward-curving cabriole legs flaring to hoof feet, each carved with cloud scrolls on the sides and an upturned flower bud in front, the rounded apron with a gently curving outline joined to the legs by archaic dragon-form brackets.

34 ¼ in. (87.6 cm.) high, 41 ½ in. (104.5cm.) wide,
20 7/16 in. (52 cm.) deep

HK\$1,800,000-2,500,000
US\$240,000-320,000

PROVENANCE

Ho Cheung, Hong Kong

Semi-circular tables are recorded in the Ming carpenter's manuals, *Lu Ban Jing*, suggesting they were once more popular than the few surviving examples would seem to indicate.

A *demilune* table and two outline drawings are illustrated by Wang Shixiang, *Connoisseurship of Chinese Furniture*, vol. II, p. 118, B125-B127. Compare to a *huanghuali demilune* table of similar form and proportion but with lobed brackets formerly in the Mr. and Mrs Robert P. Piccus Collection, sold at Christie's New York, 18 September 1997, lot 33.

There are two types of semi-circular table, the first were made in pairs with the rear legs half the width of the front leg, so when joined together all legs were the same width; and the second type here produced as a single table with the rear legs the same width as the front leg. These tables were meant to be displayed on their own as seen in the woodblock print (**fig.1**). The current lot belongs to the second type.

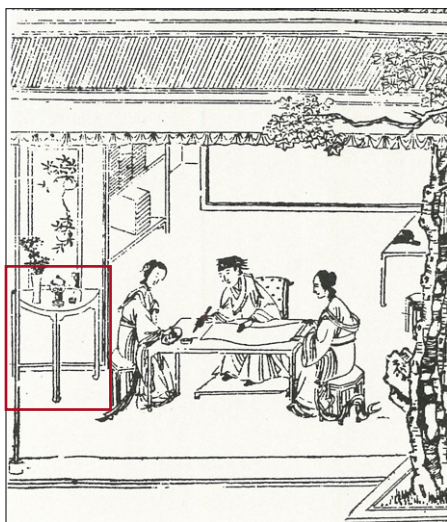


fig.1 Detail of Ming dynasty woodblock print illustration to *Xihu erji*
圖一 明代《西湖二集》木刻版畫插圖



Side view
側面



清十七/十八世紀 黃花梨月牙桌

來源

何祥，香港

《魯班經匠家鏡》中記錄圓桌分為兩半做，靠邊足的寬度為中間足的一半。既可合在一起擺設，也可分別貼牆或屏風擺設。據王世襄《明式家具研究》，北京，2018，頁139中稱，完整的、不是由兩半拼成的圓桌明代就已使用。

比較一類似黃花梨月牙桌，惟飾弧形角牙，原為Piccus伉儷珍藏，後拍賣於紐約佳士得，1997年9月18日，拍品33號。



~2710

A PAIR OF HUANGHUALI CABINETS WITH LATTICED PANELS

QING DYNASTY, 18TH CENTURY

Each cabinet is of rectangular form with two doors decorated with *swastika* latticework on the upper panel and *shou*-character flanked by *chi*-dragons on the lower panel, opening to reveal the shelved interior. The sides and the back are similarly decorated with *swastika* latticework panels. All above a shaped openwork apron with a pair of confronting *chi*-dragons.

28 ¾ in. (73 cm.) high, 24 ⅝ in. (62.5 cm.) wide,
13 ⅜ in. (34 cm.) deep

(2)

HK\$800,000-1,200,000
US\$110,000-150,000

PROVENANCE

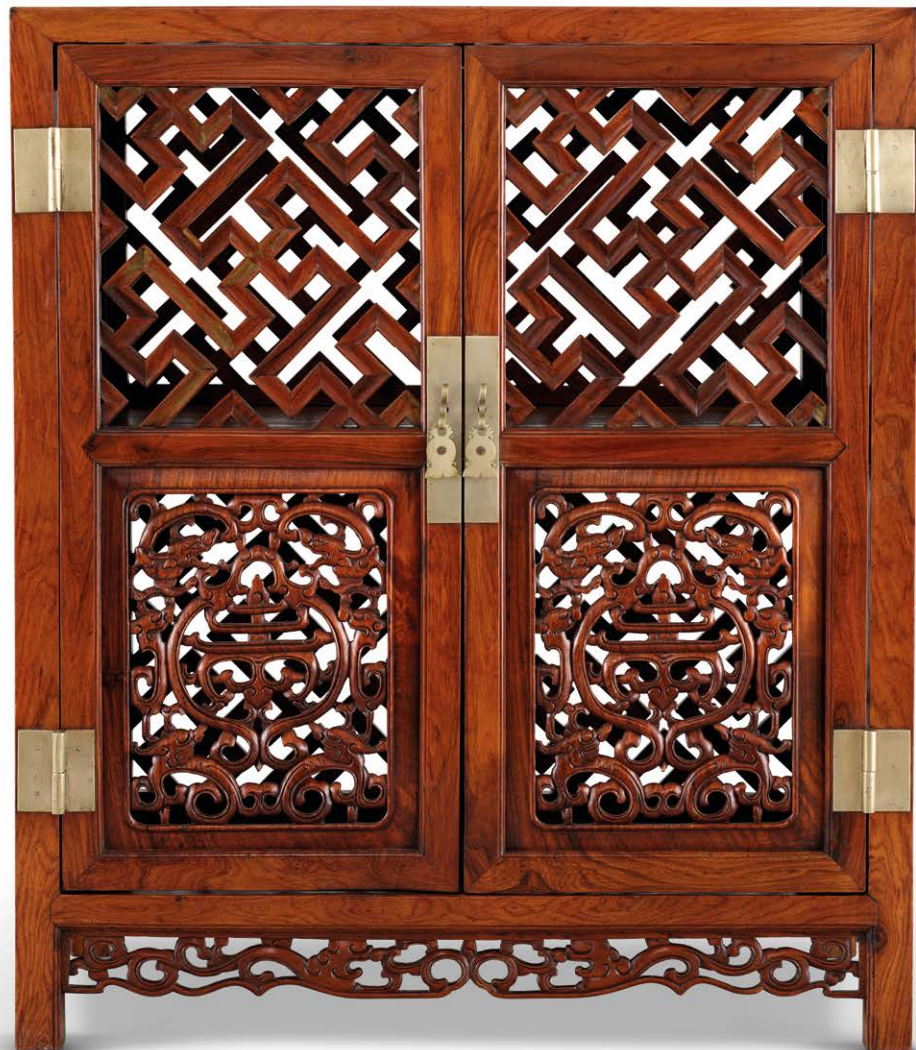
Eastern Pacific Co.(Hei Hung Lu), Hong Kong
Robert Hatfield Ellsworth, Hong Kong

EXHIBITED

*The Radiant Ming, 1368-1644 through the Min Chiu Society
Collection*, Hong Kong, 2015, cat. pp. 280-281, no. 218

LITERATURE

*Chinese Furniture: Selected articles from Orientations 1984-
1994*, advertisement for Eastern Pacific Co.



清十八世紀 黃花梨透格櫃一對

來源

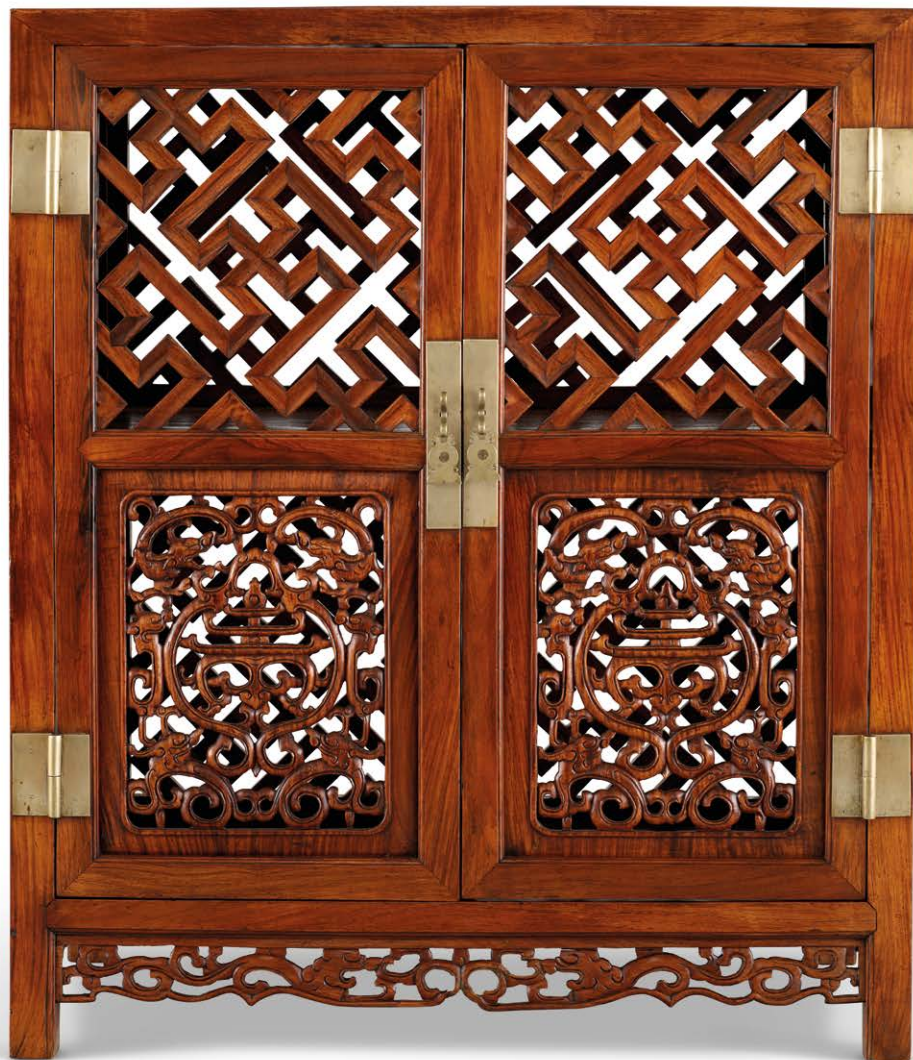
東泰商行（黑洪祿），香港
安思遠，香港

展覽

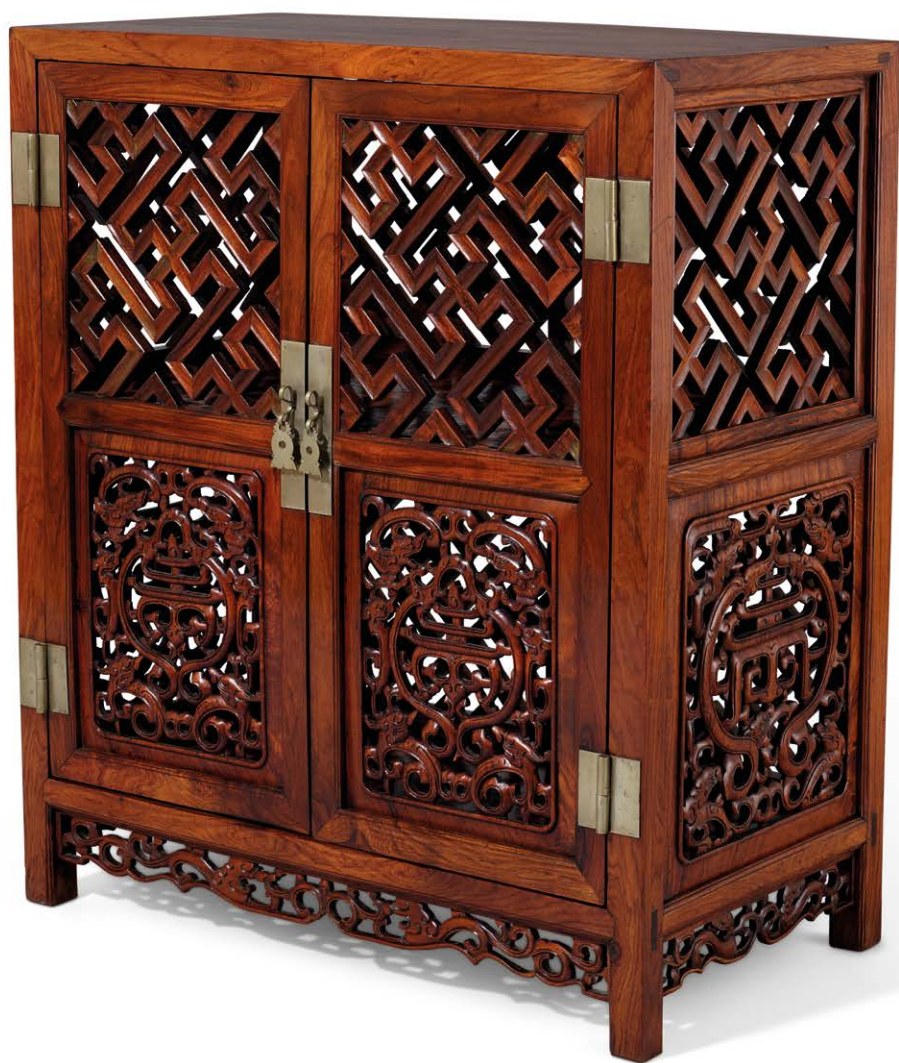
《日昇月騰：從敏求精舍藏品看明代》，香港，2015年，
圖錄280-281頁，圖版218號

出版

《Chinese Furniture: Selected articles from
Orientations 1984-1994》，東泰商行廣告頁







~2711

A HUANGHUALI OPENWORK SIX-PANEL SCREEN

QING DYNASTY, 18TH CENTURY

Each narrow panel consists of five well carved horizontal panels, the top two and the bottom one with begonia-shaped medallions enclosing stylized *shou* character and flanked by *chi*-dragons writhing amidst scrolling clouds, divided by a narrower panel of *qilin* and a panel of two confronting *chi*-dragons. The rectangular legs are joined by shaped apron with a beaded edge and reticulated *chi*-dragon scrolls.

74 $\frac{3}{8}$ in. (189 cm.) high, 22 $\frac{5}{8}$ in. (57.5 cm.) wide, each

HK\$1,500,000-2,500,000
US\$200,000-320,000

PROVENANCE

C.L. Ma, Hong Kong

Screens were movable partitions that could protect, divide, enhance and beautify a room and were essential elements in the furnishings of Chinese houses. The multi-panelled screens have long history and developed from the single-panelled screen which is traceable to as early as the Warring States period (475-221 BC).

清十八世紀 黃花梨透雕 螭龍紋六扇圍屏

來源

馬可樂，香港

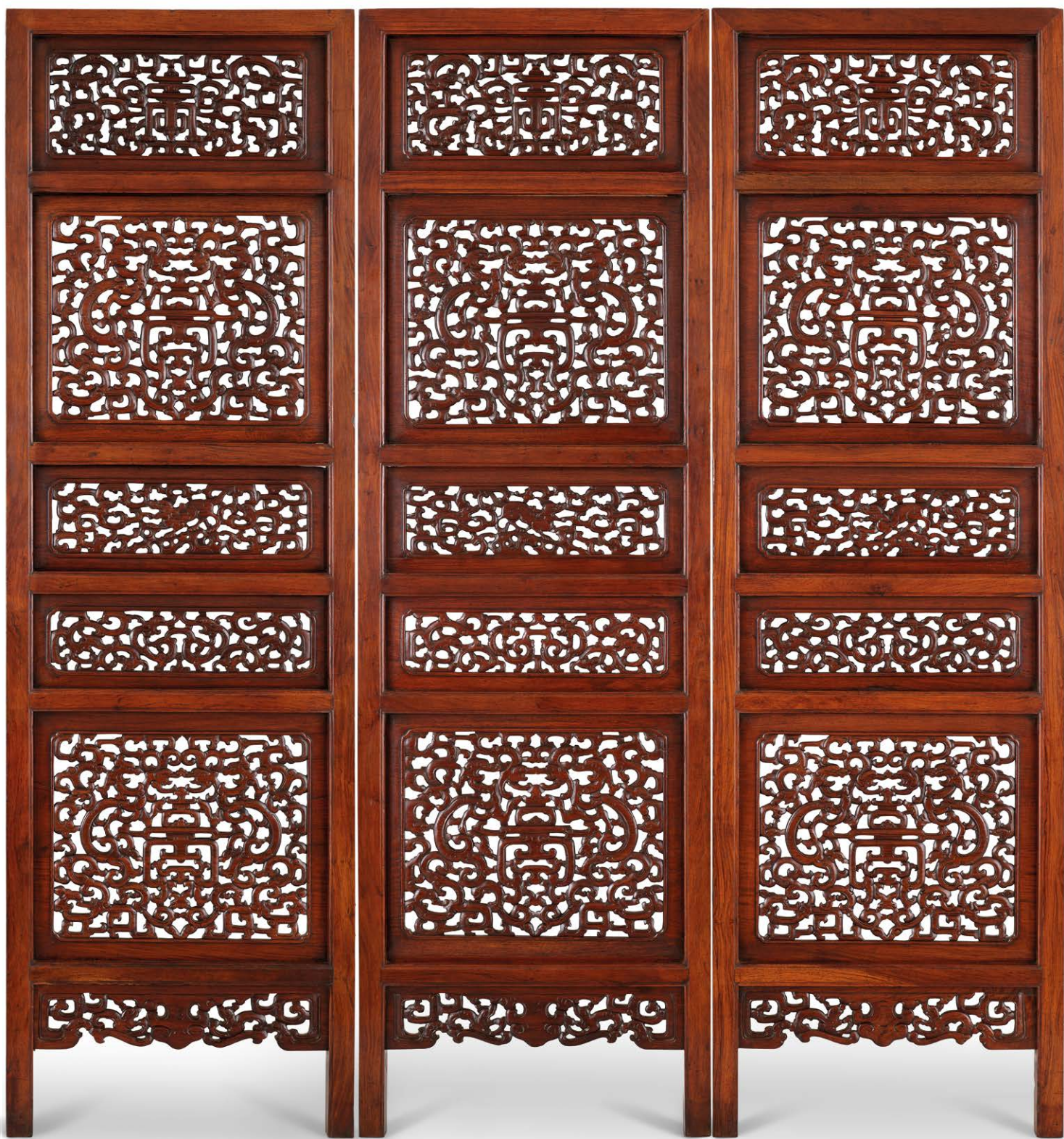
圍屏為歷史最悠久的中國家具品類之一。分扇的設計使其便於搬運且適合放置於不同情境：可作為隔斷，增添隱蔽性，亦具備很強裝飾性，美化空間。

本件圍屏兩面雕工均一般精美，華麗非凡，不惜工本。









~2712

A HUANGHUALIKANG TABLE,
KANGZHUO

17TH CENTURY

The two-panel top is set in a rectangular frame with a 'water stopping' edge above a narrow waist. The cusped, beaded aprons are carved with dragons and *ruyi* scrolls and further carved at the corners with stylized *ruyi* in imitation of *ruyi*-form metal mounts. The whole is raised on cabriole legs terminating in hoof feet and raised on square chucks carved with lotus petals.

13 1/8 in. (33.5 cm.) high, 39 3/8 in. (100 cm.) wide, 26 3/8 in. (67 cm.) deep

HK\$1,200,000-1,800,000
US\$160,000-230,000

PROVENANCE

Robert Hatfield Ellsworth, New York
Luis Virata, Manila
Grace Wu Bruce, Hong Kong

十七世紀 黃花梨螭龍紋炕桌

來源

安思遠，紐約
Luis Virata，馬尼拉
嘉木堂，香港







A CONNOISSEUR'S STUDIO



~2713

A LARGE HUANGHUALI
TRAVELLING SCHOLAR'S
BOOKCASE, TUSHUXINGGUI

QING DYNASTY, 17TH- 18TH CENTURY

The cabinet is constructed with well-figured floating-panel doors, flush-fitting with the frame, opening to the interior with single shelf and three rows of drawers. The side posts are tenoned to the base frame and flanked by plain spandrels and are joined at the top by the top rail.

27 ¾ in. (70.5 cm.) high, 22 ¼ in. (56.5 cm.) wide,
13 ⅞ in. (34.5 cm.) deep

HK\$300,000-500,000
US\$39,000-64,000

PROVENANCE

C.L. Ma, Hong Kong

清十七/十八世紀 黃花梨圖書
行櫃

來源

馬可樂，香港



Side view
側面





~2714

A VERY RARE *HUANGHUALI*
WAISTLESS FLUSH CORNER-
LEG RECTANGULAR STOOL,
CHANGFANGDENG

QING DYNASTY, 18TH CENTURY

The stool is of 'four-corners flush' form, the soft mat seat is set within rectangular frame above a curvilinear, beaded apron with a carved lotus flower at the centre. The whole is supported on shaped and beaded legs of square section ending in hoof feet.

19 ¼ in. (49 cm.) high, 22 ¾ in. (57.5 cm.) wide,
16 ½ in. (42 cm.) deep

HK\$600,000-800,000
US\$77,000-100,000

PROVENANCE

C.L. Ma, Hong Kong

Compare to a very similar *huanghuali* stool sold at Christie's Hong Kong, 9 July 2020, lot 2899 (**fig.1**).

清十八世紀 黃花梨四面平
長方凳

來源

馬可樂，香港

比較一類似的黃花長方凳，拍賣於香港佳士得，2020年7月9日，拍品2899號（圖一）。



fig. 1 sold at Christie's Hong Kong, 9 July 2020, Lot 2899

圖一 拍賣於香港佳士得，2020年7月9日，拍品2899號









~2715

A HUANGHUALI WAISTLESS
FLUSH CORNER-LEG
RECTANGULAR STOOL,
CHANGFANGDENG

QING DYNASTY, 18TH CENTURY

The stool is of 'four-corners flush' form, the soft mat seat is set within rectangular frame above a curvilinear, beaded apron with a carved lotus flower at the centre. The whole is supported on shaped and beaded legs of square section.

12 $\frac{3}{16}$ in. (32 cm.) high, 22 $\frac{5}{8}$ in. (57.5 cm.) wide,
16 $\frac{1}{2}$ in. (42 cm.) deep

HK\$200,000-300,000
US\$26,000-38,000

PROVENANCE

Art of Chen, Taipei

清十八世紀 黃花梨四面平
長方凳

來源

陳氏藝術，台北





~2716

A SMALL HUANGHUALI
RECESSED-LEG SIDE TABLE,
PINGTOU'AN

QING DYNASTY, 18TH CENTURY

The single-panel top is set within a rectangular frame above plain aprons and spandrels. The whole is raised on legs of round section which are joined by a single shelf.

26 $\frac{3}{16}$ in. (66.5 cm.) high, 22 $\frac{1}{4}$ in. (56.5 cm.) wide,
13 $\frac{3}{8}$ in. (34 cm.) deep

HK\$300,000-400,000
US\$39,000-51,000

PROVENANCE

C.L. Ma, Hong Kong

Compare the present table to a *huanghuali* side table, also with an integral shelf, from the collection of Mr. and Mrs. James Biddle, illustrated by R.H. Ellsworth in *Chinese Furniture: Hardwood Examples of the Ming and Early Ch'ing Dynasties*, New York, 1971, p. 173, no. 72. See also a similar small recessed-leg side table from the Marie Theresa L. Virata Collection, sold at Christie's New York, 16 March 2017, lot 668.

清十八世紀 黃花梨帶屨
小平頭案

來源

馬可樂，香港

比較一類似的黃花梨帶屨小平頭案，為James Biddle 伉儷珍藏，見安思遠著《Chinese Furniture: Hardwood Examples of the Ming and Early Ch'ing Dynasties》，紐約，1971年，173頁，圖版72號。另比較Virata珍藏一例，拍賣於紐約佳士得，2017年3月16日，拍品668號。





~2717

A RARE HUANGHUALI
CORNER-LEG BENCH,
ER'RENDENG

QING DYNASTY, 18TH CENTURY

The rectangular soft cane seat is set in a frame with 'ice-plate' edge supported on a narrow waist, above square-corner legs terminating in hoof feet, joined by humpback stretchers.

19 ½ in. (48.5 cm.) high, 39 15/16 in. (101.5 cm.) wide,
16 ½ in. (42 cm.) deep

HK\$300,000-500,000
US\$39,000-64,000

PROVENANCE

C.L. Ma, Hong Kong

清十八世紀 黃花梨羅鍋枱
二人凳

來源

馬可樂，香港





~2718

A HUANGHUALI
RECTANGULAR INCENSE
STAND, *CHANGFANGXIANGJI*

QING DYNASTY (1644-1911)

The single-panel top is set within a wide rectangular frame above a plain narrow waist and plain aprons, all raised on four tall square-section legs joined by humpback stretchers.

36 5/8 in. (93 cm.) high, 16 5/8 in. (42.2 cm.) wide, 12 3/16 in. (31 cm.) deep

HK\$150,000-250,000
US\$20,000-32,000

PROVENANCE

C.L. Ma, Hong Kong

清 黃花梨長方香几

來源

馬可樂，香港



Another view
另一面





~2719

A BURLWOOD INSET
HUANGHUALI SQUARE STAND

QING DYNASTY (1644-1911)

The framed top is inset with a square burlwood panel supported on square-section legs, joined by struts of varying lengths forming latticed apron on all four sides, all set into a base stretcher of conforming shape.

35 ¹³/₁₆ in. (92 cm.) high, 23 ⁷/₁₆ in. (59.5 cm.) wide,
23 ⁷/₁₆ in. (59.5 cm.) deep

HK\$150,000-250,000
US\$20,000-32,000

PROVENANCE

Chan Shing Kee, Hong Kong
Robert Hatfield Ellsworth, Hong Kong

清 黃花梨嵌瘿木井字檯格几

來源

陳勝記，香港
安思遠，香港





~2720

A SET OF FOUR *HONGMU*
HEXAGONAL STOOLS

QING DYNASTY, 19TH CENTURY

Each with hexagonal top above a narrow waist and shaped, beaded aprons carved at the center with *ruyi* heads, all raised on legs of grooved section terminating in hoof feet, set into a base stretcher raised on low bracket feet.

13½ in. (34.3 cm.) high, 14 in. (35.6 cm.) wide (4)

HK\$180,000-250,000

US\$24,000-32,000

PROVENANCE

The Collection of Robert Hatfield Ellsworth Part II, sold at Christie's New York, 18 March 2015, lot 190

清十九世紀 紅木六方凳一套
四件

來源

《錦瑟華年 - 安思遠私人珍藏 第二部分：中國傢具、文玩及書畫》，紐約佳士得，2015年3月18日，拍品190號





2721

A ROOTWOOD TREE-TRUNK
FORM SCROLL POT

QING DYNASTY (1644-1911)

The scroll pot is carved from a large section of hollowed
rootwood with large gnarled protrusions.

14 5/8 in. (37.2 cm.) high.

HK\$60,000-80,000
US\$7,700-10,000

PROVENANCE

Andy Hei Ltd., Hong Kong

清 木根畫斗

來源

研木得益，香港



2722

A LARGE ROOTWOOD TREE-
TRUNK FORM SCROLL POT

QING DYNASTY (1644- 1911)

The large scroll pot of gnarled rootwood is of irregular outline and well hollowed. The gnarled exterior detailed with burls and knots and prominent protrusions.

15 ¾ in. (40 cm.) wide.

HK\$60,000-80,000

US\$7,700-10,000

清 木根畫斗



~2723

A LARGE HUANGHUALI BRUSHPOT

QING DYNASTY (1644-1911)

The brushpot is of cylindrical form and has an attractive grain.

9 ⁷/₁₆ in. (24 cm.) high.

HK\$50,000-80,000

US\$6,400-10,000

PROVENANCE

C.L. Ma, Hong Kong

清 黃花梨筆筒

來源

馬可樂, 香港



~2724

A SMALL HUANGHUALI CARRYING CASE

QING DYNASTY (1644-1911)

The case is of rectangular form with a removable panel door set within a board frame, opening to reveal the interior with shelves and two drawers.

20 ⁷/₁₆ in. (53 cm.) high, 14 ⁹/₁₆ in. (37 cm.) wide, 11 in. (28 cm.) deep

HK\$50,000-70,000

US\$6,400-9,000

清 黃花梨行櫃





2725

A ZITAN RECTANGULAR
DOCUMENT CASE

QING DYNASTY, 18TH CENTURY

The rectangular box and cover has a pair of bail handles at the sides and is reinforced on the corners with inlaid *ruyi*-shaped metal mounts and a circular lock plate and *ruyi*-shaped clasp on the front.

6 $\frac{1}{16}$ in. (15.5 cm.) high, 14 $\frac{15}{16}$ in. (38 cm.) wide,
8 $\frac{1}{4}$ in. (21 cm.) deep

HK\$100,000-150,000
US\$13,000-19,000

清十八世紀 紫檀小箱





HIGH VALUE LOT PRE-REGISTRATION

IF YOU ARE INTERESTED IN ANY HIGH VALUE LOT (I.E., ALL LOTS OF OUR 20TH AND 21ST CENTURY ART EVENING SALE AND IN RESPECT OF OTHER CATEGORIES OF LOTS, A LOT THE LOW ESTIMATE OF WHICH IS HK\$8,000,000 OR ABOVE), YOU ARE INVITED TO COMPLETE THE HIGH VALUE LOT PRE-REGISTRATION. PLEASE NOTE THE POINTS BELOW IN ORDER TO ASSIST YOU WITH THE PRE-REGISTRATION AND PAYMENT PROCESS.

- After you have successfully registered as a bidder with Christie's, you should complete the High Value Lot pre-registration before the date of sale through the Bid Department or on the date of sale in the High Value Lot pre-registration area.
- Unless otherwise agreed by us, you will be permitted to bid for High Value Lots only if Christie's has confirmed your payment of deposit and your completion of the High Value Lot pre-registration before the sale.
- Upon the pre-registration, you should pay a deposit equivalent to the higher of HK\$1,600,000, and 20% or more of the aggregate of the low estimate of all lots you intend to bid for. You will need to pay such deposit by way of wire transfer or credit card(s) acceptable to Christie's for the prospective purchase(s). Please note that Christie's does not accept payment from third parties. This also applies to agents.

- If you are not successful in any bid and do not owe Christie's or Christie's group of companies any debt, the deposit will be refunded to you by way of wire transfer or such other methods as determined by Christie's. Please make sure that you provide your bank details in the pre-registration form. If you require payment other than in Hong Kong dollars, we shall charge you for any currency costs incurred and shall not be liable for any exchange rate loss. The exchange rate as provided to us by the bank on the date of exchange is final and binding on you. While we will arrange to refund the deposit to you within seven days after the date of sale, we do not guarantee when you will receive the payment as the time for banks to process a fund transfer or refund varies.
- Upon successful pre-registration, you will be given a numbered High Value Lot paddle for identification purpose. The auctioneer will usually only accept bids made with the High Value Lot paddle or by its registered bidder. This applies to saleroom, telephone and absentee bids.
- Christie's has the right to change the High Value Lot pre-registration procedures and requirements from time to time without notice.

ENQUIRIES

For further details, please contact our Client Services Department at + 852 2760 1766 or email infoasia@christies.com.

高額拍賣品預先登記

如閣下擬競投高額拍賣品（即佳士得二十及二十一世紀藝術晚間拍賣之所有拍賣品與其他類別拍賣品低估價為港幣 8,000,000 元或以上之拍賣品），必須辦理高額拍賣品預先登記。為方便閣下辦理預先登記及付款手續，請注意以下事項：

- 在登記成為佳士得競投人士後，須於拍賣日期前通過投標部辦理高額拍賣品預先登記，或於拍賣當日往高額拍賣品預先登記處辦理預先登記。
- 除非另得本公司同意，否則只能於佳士得確認閣下拍賣前已付清保證金及完成高額拍賣品預先登記後，方可競投高額拍賣品。
- 辦理預先登記時，閣下須以電匯方式或佳士得接受之信用卡繳付港幣 1,600,000 元或閣下擬競投全部拍賣品低估價總額之 20% 或以上（以較高者為準）作為保證金。請注意佳士得恕不接受第三方代付之款項。此亦適用於代理人。

- 若閣下未能成功競投任何拍賣品，於佳士得或佳士得公司集團亦無任何欠款，保證金將以電匯方式或佳士得決定之其他方式退還閣下。請確保於預先登記表格上提供閣下之銀行資料詳情。若閣下須以港幣以外貨幣付款，本公司將收取因而產生之貨幣費用，概不承擔有關匯兌虧損。匯兌當天銀行提供之匯率應為最終匯率，並對閣下具約束力。雖然本公司將安排於拍賣日期後七日內退還保證金，惟不同銀行處理匯款或退款所需時間各有差異，佳士得對閣下何時收到有關款項不作保證。
- 成功辦理預先登記後，閣下將獲發高額拍賣品競投牌，以資識別。拍賣官一般只接受以高額拍賣品競投牌或其註冊競投人士作出之競投。此亦適用於拍賣現場、電話及書面競投。
- 佳士得有權不時變更高額拍賣品預先登記程序及規定而毋須作出任何通知。

查詢

如欲了解詳情，請致電 + 852 2760 1766 與本公司客戶服務部聯絡或電郵至 infoasia@christies.com。

CONDITIONS OF SALE • BUYING AT CHRISTIE'S

CONDITIONS OF SALE

These Conditions of Sale and the Important Notices and Explanation of Cataloguing Practice set out the terms on which we offer the **lots** listed in this catalogue for sale. By registering to bid and/or by bidding at auction you agree to these terms, so you should read them carefully before doing so. You will find a glossary at the end explaining the meaning of the words and expressions coloured in **bold**.

Unless we own a **lot** (symbol), Christie's acts as agent for the seller.

A BEFORE THE SALE

1 DESCRIPTION OF LOTS

(a) Certain words used in the catalogue description have special meanings. You can find details of these on the page headed "Important Notices and Explanation of Cataloguing Practice" which forms part of these terms. You can find a key to the Symbols below next to certain catalogue entries under the section of the catalogue called "Symbols Used in this Catalogue".

(b) Our description of any **lot** in the catalogue, any **condition** report and any other statement made by us (whether orally or in writing) about any **lot**, including about its nature or **condition**, artist, period, materials, approximate dimensions or **provenance** are our opinion and not to be relied upon as a statement of fact. We do not carry out in-depth research of the sort carried out by professional historians and scholars. All dimensions and weights are approximate only.

2 OUR RESPONSIBILITY FOR OUR DESCRIPTION OF LOTS

We do not provide any guarantee in relation to the nature of a **lot** apart from our **authenticity warranty** contained in paragraph E2 and to the extent provided in paragraph I below.

3 CONDITION

(a) The **condition** of **lots** sold in our auctions can vary widely due to factors such as age, previous damage, restoration, repair and wear and tear. Their nature means that they will rarely be in perfect **condition**. **Lots** are sold "as is" in the **condition** they are in at the time of the sale, without any representation or warranty or assumption of liability of any kind as to **condition** by Christie's or by the seller.

(b) Any reference to **condition** in a catalogue entry or in a **condition** report will not amount to a full description of **condition**, and images may not show a **lot** clearly. Colours and shades may look different in print or on screen to how they look on physical inspection. **Condition** reports may be available to help you evaluate the **condition** of a **lot**. **Condition** reports are provided free of charge as a convenience to our buyers and are for guidance only. They offer our opinion but they may not refer to all faults, inherent defects, restoration, alteration or adaptation because our staff are not professional restorers or conservators. For that reason they are not an alternative to examining a **lot** in person or taking your own professional advice. It is your responsibility to ensure that you have requested, received and considered any **condition** report.

4 VIEWING LOTS PRE-AUCTION

(a) If you are planning to bid on a **lot**, you should inspect it personally or through a knowledgeable representative before you make a bid to make sure that you accept the description and its **condition**. We recommend you get your own advice from a restorer or other professional adviser.

(b) Pre-auction viewings are open to the public free of charge. Our specialists may be available to answer questions at pre-auction viewings or by appointment.

5 ESTIMATES

Estimates are based on the **condition**, rarity, quality and **provenance** of the **lots** and on prices recently paid at auction for similar property. **Estimates** can change. Neither you, nor anyone else, may rely on any **estimates** as a prediction or guarantee of the actual selling price of a **lot** or its value for any other purpose. **Estimates** do not include the **buyer's premium** or any applicable taxes. **Estimates** may be shown in different currencies from that of the saleroom for guidance only. The rate of exchange used in our printed catalogues is fixed at the latest practical date prior to the printing of the catalogue and may have

changed by the time of our sale.

6 WITHDRAWAL

Christie's may, at its option, withdraw any **lot** at any time prior to or during the sale of the **lot**. Christie's has no liability to you for any decision to withdraw.

7 JEWELLERY

(a) Coloured gemstones (such as rubies, sapphires and emeralds) may have been treated to improve their look, through methods such as heating and oiling. These methods are accepted by the international jewellery trade but may make the gemstone less strong and/or require special care over time.

(b) All types of gemstones may have been improved by some method. You may request a gemmological report for any item which does not have a report if the request is made to us at least three weeks before the date of the auction and you pay the fee for the report.

(c) We do not obtain a gemmological report for every gemstone sold in our auctions. Where we do get gemmological reports from internationally accepted gemmological laboratories, such reports will be described in the catalogue. Reports from American gemmological laboratories will describe any improvement or treatment to the gemstone. Reports from European gemmological laboratories will describe any improvement or treatment only if we request that they do so, but will confirm when no improvement or treatment has been made. Because of differences in approach and technology, laboratories may not agree whether a particular gemstone has been treated, the amount of treatment or whether treatment is permanent. The gemmological laboratories will only report on the improvements or treatments known to the laboratories at the date of the report.

(d) For jewellery sales, **estimates** are based on the information in any gemmological report or, if no report is available, assume that the gemstones may have been treated or enhanced.

8 WATCHES & CLOCKS

(a) Almost all clocks and watches are repaired in their lifetime and may include parts which are not original. We do not give a **warranty** that any individual component part of any watch or clock is **authentic**. Watchbands described as "associated" are not part of the original watch and may not be **authentic**. Clocks may be sold without pendulums, weights or keys.

(b) As collectors' watches and clocks often have very fine and complex mechanisms, a general service, change of battery or further repair work may be necessary, for which you are responsible. We do not give a **warranty** that any watch or clock is in good working order. Certificates are not available unless described in the catalogue.

(c) Most watches have been opened to find out the type and quality of movement. For that reason, watches with water resistant cases may not be waterproof and we recommend you have them checked by a competent watchmaker before use. Important information about the sale, transport and shipping of watches and watchbands can be found in paragraph H2(g).

B REGISTERING TO BID

1 NEW BIDDERS

(a) If this is your first time bidding at Christie's or you are a returning bidder who has not bought anything from any of our salerooms within the last two years you must register at least 48 hours before an auction to give us enough time to process and approve your registration. We may, at our option, decline to permit you to register as a bidder. You will be asked for the following:

(i) for individuals: Photo identification (driving licence, national identity card or passport) and, if not shown on the ID document, proof of your current address (for example, a current utility bill or bank statement);

(ii) for corporate clients: Your Certificate of Incorporation or equivalent document(s) showing your name and registered address, photo ID copy of the authorized bidder, letter of authorization duly signed by legal representative and, where applicable, chopped with company stamp and together with documentary proof of directors and beneficial owners;

(iii) for trusts, partnerships, offshore companies and other business structures, please contact us in advance to discuss our requirements.

(b) We may also ask you to give us a financial reference and/or a deposit as a condition of allowing you to bid. For help, please contact our Client Services Department on +852 2760 1766.

2 RETURNING BIDDERS

We may at our option ask you for current identification as described in paragraph B1(a) above, a financial reference or a deposit as a condition of allowing you to bid. If you have not bought anything from any of our salerooms in the last two years or if you want to spend more than on previous occasions, please contact our Bids Department on +852 2978 9910 or email to bidsasia@christies.com.

3 IF YOU FAIL TO PROVIDE THE RIGHT DOCUMENTS

If in our opinion you do not satisfy our bidder identification and registration procedures including, but not limited to completing any anti-money laundering and/or anti-terrorism financing checks we may require to our satisfaction, we may refuse to register you to bid, and if you make a successful bid, we may cancel the contract for sale between you and the seller. Christie's may, at its option, specify the type of photo identification it will accept, for the purposes of bidder identification and registration procedures.

4 BIDDING ON BEHALF OF ANOTHER PERSON

(a) **As authorised bidder:** If you are bidding on behalf of another person, that person will need to complete the registration requirements above before you can bid, and supply a signed letter authorising you to bid for him/her.

(b) **As agent for an undisclosed principal:** If you are bidding as an agent for an undisclosed principal (the ultimate buyer(s)), you accept personal liability to pay the **purchase price** and all other sums due. Further, you warrant that:

(i) you have conducted appropriate customer due diligence on the ultimate buyer(s) of the **lot(s)** in accordance with any and all applicable anti-money laundering and sanctions laws, consent to us relying on this due diligence, and you will retain for a period of not less than 5 years the documentation and records evidencing the due diligence;

(ii) you will make such documentation and records evidencing your due diligence promptly available for immediate inspection by an independent third-party auditor upon our written request to do so. We will not disclose such documentation and records to any third-parties unless (1) it is already in the public domain, (2) it is required to be disclosed by law, or (3) it is in accordance with anti-money laundering laws;

(iii) the arrangements between you and the ultimate buyer(s) are not designed to facilitate tax crimes;

(iv) you do not know, and have no reason to suspect, that the funds used for settlement are connected with, the proceeds of any criminal activity or that the ultimate buyer(s) are under investigation, charged with or convicted of money laundering, terrorist activities or other money laundering predicate crimes.

A bidder accepts personal liability to pay the **purchase price** and all other sums due unless it has been agreed in writing with Christie's before commencement of the auction that the bidder is acting as an agent on behalf of a named third party acceptable to Christie's and that Christie's will only seek payment from the named third party.

5 BIDDING IN PERSON

If you wish to bid in the saleroom you must register for a numbered bidding paddle at least 30 minutes before the auction. For help, please contact the Client Services Department on +852 2760 1766.

6 BIDDING SERVICES

The bidding services described below are a free service offered as a convenience to our clients and Christie's is not responsible for any error (human or otherwise), omission or breakdown in providing these services.

(A) PHONE BIDS

Your request for this service must be made no later than 24 hours prior to the auction and may also be made on the Christie's WeChat Mini Program. We

will accept bids by telephone for **lots** only if our staff are available to take the bids. Telephone bids cannot be accepted for lots estimated below HK\$30,000. If you need to bid in a language other than in English, you must arrange this well before the auction. We may record telephone bids. By bidding on the telephone, you are agreeing to us recording your conversations. You also agree that your telephone bids are governed by these Conditions of Sale.

(B) INTERNET BIDS ON CHRISTIE'S LIVE™

For certain auctions we will accept bids over the Internet. To learn more, please visit <https://www.christies.com/auctions/christies-live-on-mobile>. You should register at least 24 hours in advance of the sale in order to bid online with Christie's LIVE™.

As well as these Conditions of Sale, internet bids are governed by the Christie's LIVE™ terms of use which are available on <https://www.christies.com/LiveBidding/OnlineTermsOfUse.aspx>.

(C) WRITTEN BIDS

You can find a Written Bid Form at the back of our catalogues, at any Christie's office or by choosing the sale and viewing the **lots** online at www.christies.com or on the Christie's WeChat Mini Program. We must receive your completed Written Bid at least 24 hours before the auction. Bids must be placed in the currency of the saleroom. The **auctioneer** will take reasonable steps to carry out written bids at the lowest possible price, taking into account the **reserve**. If you make a written bid on a **lot** which does not have a **reserve** and there is no higher bid than yours, we will bid on your behalf at around 50% of the **low estimate** or, if lower, the amount of your bid. If we receive written bids on a **lot** for identical amounts, and at the auction these are the highest bids on the **lot**, we will sell the **lot** to the bidder whose written bid we received first.

C CONDUCTING THE SALE

1 WHO CAN ENTER THE AUCTION

We may, at our option, refuse admission to our premises or decline to permit participation in any auction or to reject any bid.

2 RESERVES

Unless otherwise indicated, all **lots** are subject to a **reserve**. We identify **lots** that are offered without a **reserve** with the symbol - next to the **lot** number. The **reserve** cannot be more than the **lot's low estimate**, unless the **lot** is subject to a third party guarantee and the irrevocable bid exceeds the printed **low estimate**. In that case, the **reserve** will be set at the amount of the irrevocable bid. **Lots** which are subject to a third party guarantee arrangement are identified in the catalogue with the symbol ♦.

3 AUCTIONEER'S DISCRETION

The **auctioneer** can at his sole option:

- refuse any bid;
- move the bidding backwards or forwards in any way he or she may decide, or change the order of the **lots**;
- withdraw any **lot**;
- divide any **lot** or combine any two or more **lots**;
- reopen or continue the bidding even after the hammer has fallen; and
- in the case of error or dispute related to bidding and whether during or after the auction, continue the bidding, determine the successful bidder, cancel the sale of the **lot**, or reoffer and resell any **lot**. If you believe that the **auctioneer** has accepted the successful bid in error, you must provide a written notice detailing your claim within 3 business days of the date of the auction. The **auctioneer** will consider such claim in good faith. If the **auctioneer**, in the exercise of his or her discretion under this paragraph, decides after the auction is complete, to cancel the sale of a **lot**, or reoffer and resell a **lot**, he or she will notify the successful bidder no later than by the end of the 7th calendar day following the date of the auction. The **auctioneer's** decision in exercise of this discretion is final. This paragraph does not in any way prejudice Christie's ability to cancel the sale of a **lot** under any other applicable provision of these Conditions of Sale, including the rights of cancellation set forth in sections B(3), E(2)(i), F(4) and J(1).

4 BIDDING

The **auctioneer** accepts bids from:

- bidders in the saleroom;
- telephone bidders, and internet bidders through "Christie's LIVE™" (as shown above in Section B6); and
- written bids (also known as absentee bids or commission bids) left with us by a bidder before the auction.

5 BIDDING ON BEHALF OF THE SELLER

The **auctioneer** may, at his or her sole option, bid on behalf of the seller up to but not including the amount of the **reserve** either by making consecutive bids or by making bids in response to other bidders. The **auctioneer** will not identify these as bids made on behalf of the seller and will not make any bid on behalf of the seller at or above the **reserve**. If **lots** are offered without **reserve**, the **auctioneer** will generally decide to open the bidding at 50% of the **low estimate** for the **lot**. If no bid is made at that level, the **auctioneer** may decide to go backwards at his or her sole option until a bid is made, and then continue up from that amount. In the event that there are no bids on a **lot**, the **auctioneer** may deem such **lot** unsold.

6 BID INCREMENTS

Bidding generally starts below the **low estimate** and increases in steps (bid increments). The **auctioneer** will decide at his or her sole option where the bidding should start and the bid increments. The usual bid increments are shown for guidance only on the Written Bid Form at the back of this catalogue.

7 CURRENCY CONVERTER

The saleroom video screens, Christie's LIVE™ and Christie's website may show bids in some other major currencies from that of the saleroom. Any conversion is for guidance only and we cannot be bound by any rate of exchange used by Christie's. Christie's is not responsible for any error (human or otherwise), omission or breakdown in providing these services.

8 SUCCESSFUL BIDS

Unless the **auctioneer** decides to use his or her discretion as set out in paragraph C3 above, when the **auctioneer's** hammer strikes, we have accepted the last bid. This means a contract for sale has been formed between the seller and the successful bidder. We will issue an invoice only to the registered bidder who made the successful bid. While we send out invoices by post and/or email after the auction, we do not accept responsibility for telling you whether or not your bid was successful. If you have bid by written bid, you should contact us by telephone or in person as soon as possible after the auction to get details of the outcome of your bid to avoid having to pay unnecessary storage charges.

9 LOCAL BIDDING LAWS

You agree that when bidding in any of our sales that you will strictly comply with all local laws and regulations in force at the time of the sale for the relevant sale site.

D THE BUYER'S PREMIUM, TAXES

1 THE BUYER'S PREMIUM

In addition to the **hammer price**, the successful bidder agrees to pay us a **buyer's premium** on the **hammer price** of each **lot** sold. On all **lots** we charge 26% of the **hammer price** up to and including HK\$7,500,000, 21% on that part of the **hammer price** over HK\$7,500,000 and up to and including HK\$50,000,000, and 15% of that part of the **hammer price** above HK\$50,000,000.

2 TAXES

The successful bidder is responsible for any applicable tax including any VAT, sales or compensating use tax or equivalent tax wherever such taxes may arise on the **hammer price** and the **buyer's premium**. It is the buyer's responsibility to ascertain and pay all taxes due. In all circumstances Hong Kong law takes precedence. Christie's recommends you obtain your own independent tax advice.

For **lots** Christie's ships to the United States, a state sales or use tax may be due on the **hammer price**, **buyer's premium** and/or any other charges related to the **lot**, regardless of the nationality or citizenship of the purchaser. Christie's will collect sales tax where legally required. The applicable sales tax rate will be determined based upon the state, county, or locale to which the **lot** will be shipped. Successful bidders claiming an exemption from sales tax must provide appropriate documentation to Christie's prior to the release of the **lot**. For shipments to those states for which Christie's is not required to collect sales tax, a successful bidder may be required to remit use tax to that state's taxing authorities. Christie's recommends you obtain your own independent tax advice with further questions.

E WARRANTIES

1 SELLER'S WARRANTIES

For each **lot**, the seller gives a **warranty** that the seller: (a) is the owner of the **lot** or a joint owner of the **lot**

acting with the permission of the other co-owners or, if the seller is not the owner or a joint owner of the **lot**, has the permission of the owner to sell the **lot**, or the right to do so in law; and

(b) has the right to transfer ownership of the **lot** to the buyer without any restrictions or claims by anyone else.

If either of the above **warranties** are incorrect, the seller shall not have to pay more than the **purchase price** (as defined in paragraph F(1)(a) below) paid by you to us. The seller will not be responsible to you for any reason for loss of profits or business, expected savings, loss of opportunity or interest, costs, damages, **other damages** or expenses. The seller gives no **warranty** in relation to any **lot** other than as set out above and, as far as the seller is allowed by law, all **warranties** from the seller to you, and all other obligations upon the seller which may be added to this agreement by law, are excluded.

2 OUR AUTHENTICITY WARRANTY

We warrant, subject to the terms below, that the **lots** in our sales are **authentic** (our "**authenticity warranty**"). If, within 5 years of the date of the auction, you give notice to us that your **lot** is not **authentic**, subject to the terms below, we will refund the **purchase price** paid by you. The meaning of **authentic** can be found in the glossary at the end of these Conditions of Sale. The terms of the **authenticity warranty** are as follows:

(a) It will be honoured for claims notified within a period of 5 years from the date of the auction. After such time, we will not be obligated to honour the **authenticity warranty**.

(b) It is given only for information shown in **UPPERCASE type** in the first line of the **catalogue description** (the "**Heading**"). It does not apply to any information other than in the **Heading**, even if shown in **UPPERCASE type**.

(c) The **authenticity warranty** does not apply to any **Heading** or part of a **Heading** which is qualified.

Qualified means limited by a clarification in a **lot's catalogue description** or by the use in a **Heading** of one of the terms listed in the section titled **Qualified Headings** on the page of the catalogue headed "Important Notices and Explanation of Cataloguing Practice". For example, use of the term "ATTRIBUTED TO....." in a **Heading** means that the **lot** is in Christie's opinion probably a work by the named artist but no warranty is provided that the **lot** is the work of the named artist. Please read the full list of **Qualified Headings** and a **lot's full catalogue description** before bidding.

(d) The **authenticity warranty** applies to the **Heading** as amended by any **Saleroom Notice**.

(e) The **authenticity warranty** does not apply where scholarship has developed since the auction leading to a change in generally accepted opinion. Further it does not apply if the **Heading** either matched the generally accepted opinion of experts at the date of the sale or drew attention to any conflict of opinion.

(f) The **authenticity warranty** does not apply if the **lot** can only be shown not to be **authentic** by a scientific process which, on the date we published the catalogue, was not available or generally accepted for use, or which was unreasonably expensive or impractical, or which was likely to have damaged the **lot**.

(g) The benefit of the **authenticity warranty** is only available to the original buyer shown on the invoice for the **lot** issued at the time of the sale and only if, on the date of the notice of claim, the original buyer is the full owner of the **lot** and the **lot** is free from any claim, interest or restriction by anyone else. The benefit of this **authenticity warranty** may not be transferred to anyone else.

(h) In order to claim under the **authenticity warranty** you must:

(i) give us written notice of your claim within 5 years of the date of the auction. We may require full details and supporting evidence of any such claim;

(ii) at Christie's option, we may require you to provide the written opinions of two recognized experts in the field of the **lot** mutually agreed by you and us in advance confirming that the **lot** is not **authentic**. If we have any doubts, we reserve the right to obtain additional opinions at our expense; and

(iii) return the **lot** at your expense to the saleroom from which you bought it in the **condition** it was in at the time of sale.

(i) Your only right under this **authenticity warranty** is to cancel the sale and receive a refund of the **purchase price** paid by you to us. We will not, in any circumstances, be required to pay you more than the **purchase price** nor will we be liable for any loss of profits or business, loss of opportunity or value, expected savings or interest, costs, damages, **other damages** or expenses.

(j) **Books.** Where the **lot** is a book, we give an additional **warranty** for 14 days from the date of the sale that if on collation any **lot** is defective in text or illustration, we will refund your **purchase price**, subject to the following terms:

- (a) This additional **warranty** does not apply to:
 - (i) the absence of blanks, half titles, tissue guards or advertisements, damage in respect of bindings, stains, spotting, marginal tears or other defects not affecting completeness of the text or illustration;
 - (ii) drawings, autographs, letters or manuscripts, signed photographs, music, atlases, maps or periodicals;
 - (iii) books not identified by title;
 - (iv) **lots** sold without a printed **estimate**;
 - (v) books which are described in the catalogue as sold not subject to return; or
 - (vi) defects stated in any **condition** report or announced at the time of sale.
- (b) To make a claim under this paragraph you must give written details of the defect and return the **lot** to the sale room at which you bought it in the same **condition** as at the time of sale, within 14 days of the date of the sale.
- (k) **South East Asian Modern and Contemporary Art and Chinese Calligraphy and Painting.**

In these categories, the **authenticity warranty** does not apply because current scholarship does not permit the making of definitive statements. Christie's does, however, agree to cancel a sale in either of these two categories of art where it has been proven the **lot** is a forgery. Christie's will refund to the original buyer the **purchase price** in accordance with the terms of Christie's **authenticity warranty**, provided that the original buyer gives us written notice of the claim within twelve (12) months of the date of the auction. We may require full details and supporting evidence of any such claim. Such evidence must be satisfactory to us that the **lot** is a forgery in accordance with paragraph E2(h)(ii) above and the **lot** must be returned to us in accordance with E2(h)(iii) above. Paragraphs E2(b), (c), (d), (e), (f) and (g) and (i) also apply to a claim under these categories.

(l) **Chinese, Japanese and Korean artefacts (excluding Chinese, Japanese and Korean calligraphy, paintings, prints, drawings and jewellery).**

In these categories, paragraph E2 (b) - (e) above shall be amended so that where no maker or artist is identified, the **authenticity warranty** is given not only for the **Heading** but also for information regarding date or period shown in **UPPERCASE type** in the second line of the **catalogue description** (the "**Subheading**"). Accordingly, all references to the **Heading** in paragraph E2 (b) - (e) above shall be read as references to both the **Heading** and the **Subheading**.

(m) **Chinese, Japanese and Korean artefacts (excluding Chinese, Japanese and Korean calligraphy, paintings, prints, drawings and jewellery).**

In these categories, paragraph E2 (b) - (e) above shall be amended so that where no maker or artist is identified, the **authenticity warranty** is given not only for the **Heading** but also for information regarding date or period shown in **UPPERCASE type** in the second line of the **catalogue description** (the "**Subheading**"). Accordingly, all references to the **Heading** in paragraph E2 (b) - (e) above shall be read as references to both the **Heading** and the **Subheading**.

F PAYMENT

1 HOW TO PAY

(a) Immediately following the auction, you must pay the **purchase price** being:

- (i) the **hammer price**; and
- (ii) the **buyer's premium**; and
- (iii) any duties, goods, sales, use, compensating or service tax.

Payment is due no later than by the end of the 7th calendar day following the date of the auction (the "**due date**").

(b) We will only accept payment from the registered bidder. Once issued, we cannot change the buyer's name on an invoice or re-issue the invoice in a different name. You must pay immediately even if you want to export the **lot** and you need an export licence.

(c) You must pay for **lots** bought at Christie's in Hong Kong in the currency stated on the invoice in one of the following ways:

- (i) Christie's is pleased to offer clients the option of viewing invoices, paying and arranging shipping online through MyChristie's. To log in, or if you have yet to create an online account, please go to: www.christies.com/MyChristies. While this service is available for most lots, payment and shipping must be arranged offline for some items. Please contact Post-Sale Services directly to coordinate.
- (ii) Wire transfer

You must make payments to:

HSBC
Head Office
1 Queen's Road, Central, Hong Kong
Bank code: 004
Account No. 062-305438-001
Account Name: Christie's Hong Kong Limited
SWIFT: HSBCHKHHHKH

(iii) Credit Card

We accept most major credit cards subject to certain conditions. We accept payments in person by credit

card up to HK\$1,000,000 per auction sale although conditions and restrictions apply. China Union Pay is accepted with no limits on amounts. To make a 'cardholder not present' (CNP) payment, we accept payment up to HK\$1,000,000 per auction sale. CNP payments cannot be accepted by all salerooms and are subject to certain restrictions. Details of the conditions and restrictions applicable to credit card payments are available from our Post-Sale Services Department, whose details are set out in paragraph (d) below.

(iv) Cash

We accept cash subject to a maximum of HKD 80,000 per buyer per year at our Post-Sale Services Department only (subject to conditions).

(v) Banker's draft

You must make these payable to Christie's Hong Kong Limited and there may be conditions.

(vi) Cheque

You must make cheques payable to Christie's Hong Kong Limited. Cheques must be from accounts in Hong Kong dollar from a Hong Kong bank.

(d) You must quote the sale number, your invoice number and client number when making a payment. All payments sent by post must be sent to: Christie's, Post-Sale Services Department, 22nd Floor Alexandra House, 18 Chater Road, Central, Hong Kong.

(e) For more information please contact our Post-Sale Services Department by phone on +852 2760 1766 or email to postsaleasia@christies.com.

2 TRANSFERRING OWNERSHIP TO YOU

You will not own the **lot** and ownership of the **lot** will not pass to you until we have received full and clear payment of the **purchase price**, even in circumstances where we have released the **lot** to the buyer.

3 TRANSFERRING RISK TO YOU

The risk in and responsibility for the **lot** will transfer to you from whichever is the earlier of the following:

- (a) When you collect the **lot**; or
- (b) At the end of the 30th day following the date of the auction or, if earlier, the date the **lot** is taken into care by a third party warehouse unless we have agreed otherwise with you in writing.

4 WHAT HAPPENS IF YOU DO NOT PAY

(a) If you fail to pay us the **purchase price** in full by the **due date**, we will be entitled to do one or more of the following (as well as enforce our rights under paragraph F5 and any other rights or remedies we have by law):

(i) to charge interest from the **due date** at a rate of 7% a year above the 3-month HIBOR rate from time to time on the unpaid amount due;

(ii) we can cancel the sale of the **lot**. If we do this, we may sell the **lot** again, publicly or privately on such terms we shall think necessary or appropriate, in which case you must pay us any shortfall between the **purchase price** and the proceeds from the resale. You must also pay all costs, expenses, losses, damages and legal fees we have to pay or may suffer and any shortfall in the seller's commission on the resale;

(iii) we can pay the seller an amount up to the net proceeds payable in respect of the amount bid by your default in which case you acknowledge and understand that Christie's will have all of the rights of the seller to pursue you for such amounts;

(iv) we can hold you legally responsible for the **purchase price** and may begin legal proceedings to recover it together with other losses, interest, legal fees and costs as far as we are allowed by law;

(v) we can take what you owe us from any amounts which we or any company in the **Christie's Group** may owe you (including any deposit or other part-payment which you have paid to us);

(vi) we can, at our option, reveal your identity and contact details to the seller;

(vii) we can reject at any future auction any bids made by you or on your behalf or to obtain a deposit from you before accepting any bids;

(viii) to exercise all the rights and remedies of a person holding security over any property in our possession owned by you, whether by way of pledge, security interest or in any other way as permitted by the law of the place where such property is located. You will be deemed to have granted such security to us and we may retain such property as collateral security for your obligations to us; and

(ix) we can take any other action we see necessary or appropriate.

(b) If you owe money to us or to another **Christie's Group** company, we can use any amount you do pay, including any deposit or other part-payment you have made to us, or which we owe you, to pay off any amount you owe to us or another **Christie's Group** company for any transaction.

(c) If you make payment in full after the **due date**, and we choose to accept such payment we may

charge you storage and transport costs from the date that is 31 calendar days following the auction in accordance with paragraphs G(d)(i) and (ii). In such circumstances paragraph G(d)(iv) shall apply.

5 KEEPING YOUR PROPERTY

If you owe money to us or to another **Christie's Group** company, as well as the rights set out in F4 above, we can use or deal with any of your property we hold or which is held by another **Christie's Group** company in any way we are allowed to by law. We will only release your property to you after you pay us or the relevant **Christie's Group** company in full for what you owe. However, if we choose, we can also sell your property in any way we think appropriate. We will use the proceeds of the sale against any amounts you owe us and we will pay any amount left from that sale to you. If there is a shortfall, you must pay us any difference between the amount we have received from the sale and the amount you owe us.

G COLLECTION AND STORAGE

(a) We ask that you collect purchased lots promptly following the auction (**but note that you may not collect any lot until you have made full and clear payment of all amounts due to us**).

(b) For information on collecting lots, please contact Christie's Post-Sale Services Department on +852 2760 1766 / Email: postsaleasia@christies.com

(c) If you do not collect any **lot** promptly following the auction we can, at our option, remove the **lot** to another Christie's location or an affiliate or third party warehouse.

(d) If you do not collect a **lot** by the end of the 30th day following the date of the auction, unless otherwise agreed in writing:

(i) we or a third party warehouse will charge you storage costs from that date.

(ii) we can, at our option, move the **lot** to or within an affiliate or third party warehouse and we or they may charge you transport costs and administrative fees for doing so.

(iii) we may sell the **lot** in any commercially reasonable way we think appropriate.

(iv) the storage terms which can be found at www.christies.com/storage shall apply.

(v) nothing in this paragraph is intended to limit our rights under paragraph F4.

H TRANSPORT AND SHIPPING

1 TRANSPORT AND SHIPPING

We will enclose a transport and shipping form with each invoice sent to you. You must make all transport and shipping arrangements. However, we can arrange to pack, transport and ship your property if you ask us to and pay the costs of doing so. We recommend that you ask us for an **estimate**, especially for any large items or items of high value that need professional packing before you bid. We may also suggest other handlers, packers, transporters or experts if you ask us to do so.

For more information, please contact Christie's Post-Sale Services Department on +852 2760 1766 or email to postsaleasia@christies.com. We will take reasonable care when we are handling, packing, transporting and shipping a **lot**. However, if we recommend another company for any of these purposes, we are not responsible for their acts, failure to act or neglect.

2 EXPORT AND IMPORT

Any **lot** sold at auction may be affected by laws on exports from the country in which it is sold and the import restrictions of other countries. Many countries require a declaration of export for property leaving the country and/or an import declaration on entry of property into the country. Local laws may prevent you from importing a **lot** or may prevent you selling a **lot** in the country you import it into.

We will not be obliged to cancel your purchase and refund the **purchase price** if your **lot** may not be exported, imported or it is seized for any reason by a government authority. It is your responsibility to determine and satisfy the requirements of any applicable laws or regulations relating to the export or import of any **lot** you purchase.

(a) You alone are responsible for getting advice about and meeting the requirements of any laws or regulations which apply to exporting or importing any **lot** prior to bidding. If you are refused a licence or there is a delay in getting one, you must still pay us in full for the **lot**. We may be able to help you apply for the appropriate licences if you ask us to and pay our fee for doing so. However, we cannot guarantee that you will get one. For more information, please contact Christie's Post-Sale Services Department on +852 2760 1766 or email to postsaleasia@christies.com.

(b) You alone are responsible for any applicable taxes, tariffs or other government-imposed charges

relating to the export or import of the **lot**. If Christie's exports or imports the **lot** on your behalf, and if Christie's pays these applicable taxes, tariffs or other government-imposed charges, you agree to refund that amount to Christie's.

(c) Lots made of protected species

Lots made of or including (regardless of the percentage) endangered and other protected species of wildlife are marked with the symbol **W** in the catalogue. This material includes, among other things, ivory, tortoiseshell, crocodile skin, rhinoceros horn, whalebone, certain species of coral, and rosewood. You should check the relevant customs laws and regulations before bidding on any **lot** containing wildlife material if you plan to import the **lot** into another country. Several countries refuse to allow you to import property containing these materials, and some other countries require a licence from the relevant regulatory agencies in the countries of exportation as well as importation. In some cases, the **lot** can only be shipped with an independent scientific confirmation of species and/or age and you will need to obtain these at your own cost. If a **lot** contains elephant ivory, or any other wildlife material that could be confused with elephant ivory (for example, mammoth ivory, walrus ivory, helmeted hornbill ivory), please see further important information in paragraph (c) if you are proposing to import the **lot** into the USA. We will not be obliged to cancel your purchase and refund the **purchase price** if your **lot** may not be exported, imported or it is seized for any reason by a government authority. It is your responsibility to determine and satisfy the requirements of any applicable laws or regulations relating to the export or import of property containing such protected or regulated material.

(d) US import ban on African elephant ivory

The USA prohibits the import of ivory from the African elephant. Any **lot** containing elephant ivory or other wildlife material that could be easily confused with elephant ivory (for example, mammoth ivory, walrus ivory, helmeted hornbill ivory) can only be imported into the US with results of a rigorous scientific test acceptable to Fish & Wildlife, which confirms that the material is not African elephant ivory. Where we have conducted such rigorous scientific testing on a **lot** prior to sale, we will make this clear in the lot description. In all other cases, we cannot confirm whether a **lot** contains African elephant ivory, and you will buy that **lot** at your own risk and be responsible for any scientific test or other reports required for import into the USA at your own cost. If such scientific test is inconclusive or confirms the material is from the African elephant, we will not be obliged to cancel your purchase and refund the **purchase price**.

(e) Lots of Iranian origin

Some countries prohibit or restrict the purchase, export and/or import of Iranian-origin "works of conventional craftsmanship" (works that are not by a recognized artist and/or that have a function, for example: carpets, bowls, ewers, tiles, ornamental boxes). For example, the USA prohibits the import of this type of property and its purchase by US persons (wherever located). Other countries, such as Canada, only permit the import of this property in certain circumstances.

As a convenience to buyers, Christie's indicates under the title of a **lot** if the **lot** originates from Iran (Persia). It is your responsibility to ensure you do not bid on or import a **lot** in contravention of the sanctions or trade embargoes that apply to you.

(f) Gold

Gold of less than 18ct does not qualify in all countries as 'gold' and may be refused import into those countries as 'gold'.

(g) Watches

Many of the watches offered for sale in this catalogue are pictured with straps made of endangered or protected animal materials such as alligator or crocodile. These **lots** are marked with the symbol **W** in the catalogue. These endangered species straps are shown for display purposes only and are not for sale. Christie's will remove and retain the strap prior to shipment from the sale site. At some sale sites, Christie's may, at its discretion, make the displayed endangered species strap available to the buyer of the **lot** free of charge if collected in person from the sale site within 1 year of the date of the sale. Please check with the department for details on a particular **lot**.

For all symbols and other markings referred to in paragraph H2, please note that **lots** are marked as a convenience to you, but we do not accept liability for errors or for failing to mark **lots**.

I OUR LIABILITY TO YOU

(a) We give no **warranty** in relation to any statement made, or information given, by us or our

representatives or employees, about any **lot** other than as set out in the **authenticity warranty** and, as far as we are allowed by law, all **warranties** and other terms which may be added to this agreement by law are excluded. The seller's **warranties** contained in paragraph E1 are their own and we do not have any liability to you in relation to those **warranties**.

(b) (i) We are not responsible to you for any reason (whether for breaking this agreement or any other matter relating to your purchase of, or bid for, any **lot**) other than in the event of fraud or fraudulent misrepresentation by us or other than as expressly set out in these conditions of sale; and

(ii) We do not give any representation, **warranty** or guarantee or assume any liability of any kind in respect of any **lot** with regard to merchantability, fitness for a particular purpose, description, size, quality, **condition**, attribution, **authenticity**, rarity, importance, medium, **provenance**, exhibition history, literature, or historical relevance. Except as required by local law, any **warranty** of any kind is excluded by this paragraph.

(c) In particular, please be aware that our written and telephone bidding services, Christie's LIVE™, **condition** reports, currency converter and saleroom video screens are free services and we are not responsible to you for any error (human or otherwise), omission, breakdown, or delay, unavailability, suspension or termination of any of these services.

(d) We have no **responsibility** to any person other than a buyer in connection with the purchase of any **lot**.

(e) If, in spite of the terms in paragraphs (a) to (d) or E2(i) above, we are found to be liable to you for any reason, we shall not have to pay more than the **purchase price** paid by you to us. We will not be responsible to you for any reason for loss of profits or business, loss of opportunity or value, expected savings or interest, costs, **other damages**, or expenses.

J OTHER TERMS

1 OUR ABILITY TO CANCEL

In addition to the other rights of cancellation contained in this agreement, we can cancel a sale of a **lot** if we reasonably believe that completing the transaction is, or may be, unlawful or that the sale places us or the seller under any liability to anyone else or may damage our reputation.

2 RECORDINGS

We may videotape and record proceedings at any auction. We will keep any personal information confidential, except to the extent disclosure is required by law. However, we may, through this process, use or share these recordings with another **Christie's Group** company and marketing partners to analyse our customers and to help us to tailor our services for buyers. If you do not want to be videotaped, you may make arrangements to make a telephone or written bid or bid on Christie's LIVE™ instead. Unless we agree otherwise in writing, you may not videotape or record proceedings at any auction.

3 COPYRIGHT

We own the copyright in all images, illustrations and written material produced by or for us relating to a **lot** (including the contents of our catalogues unless otherwise noted in the catalogue). You cannot use them without our prior written permission. We do not offer any guarantee that you will gain any copyright or other reproduction rights to the **lot**.

4 ENFORCING THIS AGREEMENT

If a court finds that any part of this agreement is not valid or is illegal or impossible to enforce, that part of the agreement will be treated as being deleted and the rest of this agreement will not be affected.

5 TRANSFERRING YOUR RIGHTS AND RESPONSIBILITIES

You may not grant a security over or transfer your rights or responsibilities under these terms on the contract of sale with the buyer unless we have given our written permission. This agreement will be binding on your successors or estate and anyone who takes over your rights and responsibilities.

6 TRANSLATIONS

If we have provided a translation of this agreement, we will use the English version in deciding any issues or disputes which arise under this agreement.

7 PERSONAL INFORMATION

We will hold and process your personal information and may pass it to another **Christie's Group** company for use as described in, and in line with, our privacy notice at www.christies.com. If you are a resident of California you can see a copy of

our California Consumer Privacy Act statement at <https://www.christies.com/about-us/contact/ccpa>.

8 WAIVER

No failure or delay to exercise any right or remedy provided under these Conditions of Sale shall constitute a waiver of that or any other right or remedy, nor shall it prevent or restrict the further exercise of that or any other right or remedy. No single or partial exercise of such right or remedy shall prevent or restrict the further exercise of that or any other right or remedy.

9 LAW AND DISPUTES

The rights and obligations of the parties with respect to these Conditions of Sale, the conduct of the auction and any matters connected with any of the foregoing shall be governed and interpreted by the Hong Kong laws. By bidding at auction, whether present in person or by agent, by written bid, telephone or other means, the buyer shall be deemed to have accepted these Conditions and submitted, for the benefit of Christie's, to the exclusive jurisdiction of the Hong Kong courts, and also accepted that Christie's also has the right to pursue remedies in any other jurisdiction in order to recover any outstanding sums due from the buyer.

10 REPORTING ON WWW.CHRISTIES.COM

Details of all **lots** sold by us, including **catalogue descriptions** and prices, may be reported on www.christies.com. Sales totals are **hammer price plus buyer's premium** and do not reflect costs, financing fees, or application of buyer's or seller's credits. We regret that we cannot agree to requests to remove these details from www.christies.com.

K GLOSSARY

auctioneer : individual auctioneer and/or Christie's.
authentic : a genuine example, rather than a copy or forgery of:

(i) the work of a particular artist, author or manufacturer, if the **lot** is described in the **Heading** as the work of that artist, author or manufacturer;

(ii) a work created within a particular period or culture, if the **lot** is described in the **Heading** as a work created during that period or culture;

(iii) a work for a particular origin source if the **lot** is described in the **Heading** as being of that origin or source; or

(iv) in the case of gems, a work which is made of a particular material, if the **lot** is described in the **Heading** as being made of that material.

authenticity warranty : the guarantee we give in this agreement that a **lot** is **authentic** as set out in section E2 of this agreement.

buyer's premium : the charge the buyer pays us along with the **hammer price**.

catalogue description : the description of a **lot** in the catalogue for the auction, as amended by any saleroom notice.

Christie's Group : Christie's International Plc, its subsidiaries and other companies within its corporate group.

condition : the physical **condition** of a **lot**.

due date : has the meaning given to it paragraph F1(a).
estimate : the price range included in the catalogue or any saleroom notice within which we believe a **lot** may sell. **Low estimate** means the lower figure in the range and **high estimate** means the higher figure.

The **mid estimate** is the midpoint between the two.
hammer price : the amount of the highest bid the **auctioneer** accepts for the sale of a **lot**.

Heading : has the meaning given to it in paragraph E2.
lot : an item to be offered at auction (or two or more items to be offered at auction as a group).

other damages : any special, consequential, incidental or indirect damages of any kind or any damages which fall within the meaning of 'special', 'incidental' or 'consequential' under local law.

purchase price : has the meaning given to it in paragraph F1(a).

provenance : the ownership history of a **lot**.
qualified : has the meaning given to it in paragraph E2 and **Qualified Headings** means the section headed **Qualified Headings** on the page of the catalogue headed 'Important Notices and Explanation of Cataloguing Practice'.

reserve : the confidential amount below which we will not sell a **lot**.

saleroom notice : a written notice posted next to the **lot** in the saleroom and on www.christies.com, which is also read to prospective telephone bidders and notified to clients who have left commission bids, or an announcement made by the **auctioneer** either at the beginning of the sale, or before a particular **lot** is auctioned.

Subheading : has the meaning given to it in paragraph E2.

UPPER CASE type : means having all capital letters.

warranty : a statement or representation in which the person making it guarantees that the facts set out in it are correct.

業務規定 · 買方須知

業務規定

業務規定和重要通知及目錄編列方法之說明列明佳士得拍賣刊載在本目錄中**拍賣品**的條款。

通過登記競投和 / 或在拍賣會中競投即表示您同意接受這些條款，因此，您須在競投之前仔細閱讀這些條款。下述粗體字體詞語的解釋在尾部詞匯表列明。

除非佳士得擁有**拍賣品**所有權（以△標示），佳士得為賣方的代理人。

A. 拍賣之前

1. 拍賣品描述

- (a) **目錄描述**部分使用的某些詞匯有特殊意義。詳情請見構成條款部分的重要通知及目錄編列方法之說明。對目錄內的標識的解釋，請見本目錄內“本目錄中使用的各類標識”。
- (b) 本公司在本目錄中對任何**拍賣品**的描述，**拍賣品狀況**報告及其它陳述（不管是口頭還是書面），包括**拍賣品**性質或**狀況**、藝術家、時期、材料、概略尺寸或**來源**均屬我們意見之表述，而不應被作為事實之陳述。我們不像專業的歷史學家及學者那樣進行深入的研究。所有的尺寸及重量僅為粗略估計。

2. 對於**拍賣品**描述佳士得所負的責任

我們不對**拍賣品**的性質提供任何保證，除了下述第 E2 段的**真品保證**以及第 I 段另有約定。

3. 狀況

- (a) 在我們拍賣會上拍賣的**拍賣品狀況**可因年代、先前損壞、修復、修理及損耗等因素而差異甚大。其性質即意味著幾乎不可能處於完美的**狀況**。**拍賣品**是按照其在拍賣之時的情況以“現狀”出售，而且不包括佳士得或賣方的任何陳述或保證或對於**狀況**的任何形式的責任承擔。
- (b) 在本目錄條目或**狀況**報告中提及**狀況**不等同於對**狀況**的完整描述，圖片可能不會清晰展示**拍賣品**。**拍賣品**的色彩和明暗度在印刷品或屏幕上看起來可能會與實體檢查時的情況不同。**狀況**報告可協助您評估**拍賣品**的**狀況**。為方便買方，**狀況**報告為免費提供，僅作為指引。**狀況**報告提供了我們的意見，但是可能未指出所有的缺陷、內在瑕疵、修復、更改及改造，因為我們的僱員不是專業修復或維護人員。出於這個原因，他們不能替代您親自檢查**拍賣品**或您自己尋求的專業意見。買方有責任確保自己已經要求提供、收悉及考慮了任何**狀況**報告。

4. 拍賣之前檢查**拍賣品**

- (a) 如果您計劃競投一件**拍賣品**，應親自或通過具有專業知識之代表檢視，以確保

您接受**拍賣品**描述及**狀況**。我們建議您從專業修復人員或其它專業顧問那裏索取意見。

- (b) 拍賣之前的檢視免費向公眾開放。在拍賣之前的檢視或通過預約，我們的專家可在場回答問題。

5. 估價

估價是基於**拍賣品**的**狀況**、稀有程度、質量、**來源**及類似物品的近期拍價決定。**估價**可能會改變。您或任何其他人在任何情況下都不可能依賴**估價**，將其作為**拍賣品**的實際售價的預測或保證。**估價**不包括**買方酬金**或任何適用的稅費。**估價**可能以拍賣場當地貨幣以外的貨幣顯示並僅作指引。本目錄使用的貨幣兌換率是根據最近目錄付印時的兌換率設定，所以可能與拍賣當日兌換率有差別。

6. 撤回

佳士得有權單方面決定在**拍賣品**拍賣過程中或拍賣之前的任何時間將**拍賣品**撤回。佳士得無須就任何撤回決定向您承擔責任。

7. 珠寶

- (a) 有色寶石（如紅寶石、藍寶石及綠寶石）可能經過處理以改良外觀，包括加熱及上油等方法。這些方法都被國際珠寶行業認可，但是經處理的寶石的硬度可能會降低及 / 或在日後需要特殊的保養。
- (b) 所有類型的寶石均可能經過某些改良處理。如果某件**拍賣品**沒有報告，您可以在拍賣日之前至少提前三周向我們要求寶石鑒定報告，報告的費用由您支付。
- (c) 我們不會為每件拍賣的寶石拿取鑒定報告。若我們有從國際認可的寶石鑒定實驗室取得鑒定報告，我們會在目錄中提及。從美國寶石鑒定實驗室發出的鑒定報告會描述對寶石的改良或處理。歐洲寶石鑒定實驗室的報告僅在我們要求的時候，才會提及對寶石的改良及處理，但是該報告會確認該寶石沒有被改良或處理。因各實驗室使用方法和技術的差異，對某寶石是否處理過、處理的程度或處理是否為永久性，都可能持不同意見。寶石鑒定實驗室僅對報告作出日之前實驗室所知悉的改進及處理進行報告。
- (d) 對於珠寶銷售來說，**估價**是以寶石鑒定報告中的信息為基礎，如果沒有報告，就會認為寶石可能已經被處理或提升過。

8. 鐘錶

- (a) 幾乎所有的鐘錶在使用期內都被修理過，可能都含有非原裝零部件。我們不能**保證**任何鐘錶的任何個別零部件都是原裝。被陳述為“**關聯**”字樣的錶帶不是原裝錶的部分，可能不是**真品**。拍賣的鐘可能跟隨沒有鐘擺、鐘錘或鑰匙出售。
- (b) 收藏家等級的鐘錶經常有非常精細複雜的機械構造，可能需要一般保養服務、

更換電池或進一步的修理工作，而這些都由買方負責。我們不**保證**每一隻鐘錶都是在良好運作狀態。除非目錄中有提及，我們不提供證書。

- (c) 大多數的錶都被打開過查看機芯的型號及質量。因為這個原因，帶有防水錶殼的錶可能不能防水，在使用之前我們建議您讓專業鐘錶師事先檢驗。

手錶及錶帶的拍賣及運送方面的重要信息，請見第 H2(g) 段。

B. 登記競投

1. 新競投人

- (a) 如果這是您第一次在佳士得競投，或者您曾參與我們的拍賣，但在過去兩年內未曾從任何佳士得拍賣場成功競投過任何東西，您必須在拍賣之前至少 48 個小時登記，以給我們足夠的時間來處理及批准您的登記。我們有權單方面不允許您登記成為競投人。您需提供以下資料：
- (i) 個人客戶：帶有照片的身份證明（駕照執照、國民身份證或護照）及（如果身份證文件上沒有顯示現時住址資料）現時住址證明，如：用事業帳單或銀行月結單。
- (ii) 公司客戶：顯示名稱及註冊地址的公司註冊證明或類似文件，公司地址證明，被授權競投者附有相片的身份證文件，由法定代表人簽署及蓋有公司章（若有）的競投授權書，以及列出所有董事和最終受益人的文件證明。
- (iii) 信托、合夥、離岸公司及其它業務結構，請提前聯繫我們商談要求。
- (b) 我們可能要求您向我們提供財務證明及 / 或押金作為許可您競投的條件。如需幫助，請聯繫我們的客戶服務部：+852 2760 1766。

2. 再次參與競投的客人

我們可選擇要求您提供以上 B1(a) 段所提及的現時身份證明，財務證明及 / 或押金作為許可您競投的條件。如果您過去兩年中沒有從我們的拍賣會成功投得**拍賣品**，或者您本次擬出價金額高於過往，請聯繫我們的投標部：+852 2978 9910 或電郵至 bidsasia@christies.com

3. 如果您未能提供正確的文件

如果我們認為，您未能滿足我們對競投者身份及登記手續的要求，包括但不限於完成及滿足本公司可能要求進行的所有反洗黑錢和 / 或反恐主義財政審查，我們可能會不允許您登記競投，而如果您成功投得**拍賣品**，我們可能撤銷您與賣方之間的買賣合約。佳士得有權單方面決定所須的身份證明文件類別，作為滿足我們對競投者身份及登記手續的要求。

4. 代表他人競投

- (a) **作為授權競投人**：如果您代表他人競投，

在競投前，委託人需要完成以上的登記手續及提供已簽署的授權書，授權您代表其競投。

- (b) **作為隱名委託人的代理人：**如果您以代理人身份為隱名委託人（最終的買方）進行競投，您同意承擔支付**購買款項**和所有其他應付款項的個人責任。並且，您保證：
- (i) 您已經根據所有適用的反洗黑錢及制裁法律對**拍賣品**的最終的買方進行必要的客戶盡職調查，同意我們依賴該盡職調查。並且，您將在不少於 5 年的期間裏保存證明盡職調查的文件和記錄。
 - (ii) 您在收到我們書面要求後可以將證明盡職調查的文件和記錄立即提供給獨立第三方審計人員即時查閱。我們不會向任何第三方披露上述文件和記錄，除非 (1) 它已經在公共領域存在，(2) 根據法律要求須被披露，(3) 符合反洗黑錢法律規定。
 - (iii) 您和最終的買方之間的安排不是為了便於任何涉稅犯罪。
 - (iv) 您不知曉並且沒有理由懷疑用於結算的資金和任何犯罪收入有關或最終的買方因洗黑錢，恐怖活動或其他基於洗黑錢的犯罪而被調查，被起訴或被定罪。

除非競投人和佳士得在拍賣開始前書面同意競投人僅作為佳士得認可並指定的第三方的代理參與競投並且佳士得只會向該指定第三方收取付款，競投人同意就繳付**購買款項**和所有其他應付款項負上個人法律責任。

5. 親自出席競投

如果您希望在拍賣現場競投，必須在拍賣舉行前至少 30 分鐘辦理登記手續，並索取競投號碼牌。如需協助，請聯繫客戶服務部：+852 2760 1766。

6. 競投服務

下述的競投服務是為方便客戶而設，如果在提供該服務出現任何錯誤（人為或其它），遺漏或故障，佳士得均不負上任何責任。

(A) 電話競投

您必須在拍賣開始前至少 24 小時辦理申請電話競投，並可以在佳士得微信小程序中做出申請。佳士得只會在能夠安排人員協助電話競投的情況下接受電話競投。**估價**低於港幣 30,000 元之**拍賣品**將不接受電話競投。若需要以英語外的其他語言進行競投，須儘早在拍賣之前預先安排。電話競投將可被錄音。以電話競投即代表您同意其對話被錄音。您同意電話競投受業務規定管限。

(B) 在 Christie's LIVE™ 網絡競投

在某些拍賣會，我們會接受網絡競投。如需了解更多信息，請登入 <https://www.christies.com/auctions/christies-live-on-mobile>。如需網路競投，您必須在拍賣開始前至少 24 小時辦理申請。網絡競投受業務規定及 Christie's Live™ 使用條款的管限，詳情請見 <https://www.christies.com/LiveBidding/OnlineTermsOfUse.aspx> 網站。

(C) 書面競投

您可於本目錄，任何佳士得辦公室或通過 www.christies.com 或佳士得微信小程序選擇拍賣並查看**拍賣品**取得書面競投表格。您必須在拍賣開始前至少 24 小時提交已經填

妥的書面競投表格。投標必須是以拍賣會當地的貨幣為單位。**拍賣官**將在參考**底價**後，合理地履行書面競投務求以可能的最低價行使書面標。如果您以書面競投一件沒有**底價**的**拍賣品**，而且沒有其他更高叫價，我們會為您以**低價估價**的 50% 進行競投；如果您的書面標比上述更低，則以您的書面標的價格進行競投。如佳士得收到多個競投價相等的書面競投，而在拍賣時此等競投價乃該**拍賣品**之最高出價，則該**拍賣品**售給最先送達其書面競投書給本公司之競投人。

C. 舉行拍賣

1. 進入拍賣現場

我們有權不允許任何人進入拍賣場地，參與拍賣，亦可拒絕接受任何競投。

2. 底價

除非另外列明，所有**拍賣品**均有**底價**。不**底價**的**拍賣品**，在**拍賣品**號碼旁邊用 * 標記。**底價**不會高於**拍賣品**的**低價估價**，除非**拍賣品**已由第三方保證而相關不可撤銷的書面競投價高於**低價估價**。在此情況下，**底價**將被認為不可撤銷的書面競投的價格。該等由第三方保證的**拍賣品**在目錄中注以符號 * 以資識別。

3. 拍賣官之酌情權

拍賣官可以酌情選擇：

- (a) 拒絕接受任何競投；
- (b) 以其決定方式將競投提前或拖後，或改變**拍賣品**的順序；
- (c) 撤回任何**拍賣品**；
- (d) 將任何**拍賣品**分開拍賣或將兩件或多件**拍賣品**合併拍賣；
- (e) 重開或繼續競投，即便已經下槌；
- (f) 如果有關於競投的錯誤或爭議，無論是在拍賣時或拍賣後，選擇繼續拍賣、決定誰是成功競投人、取消**拍賣品**的拍賣，或是將**拍賣品**重新拍賣或出售。如果您相信**拍賣官**在接受成功投標時存在錯誤，您必須在拍賣日後 3 個工作天內提供一份詳細述您訴求的書面通知。**拍賣官**將本著真誠考慮該訴求。如果**拍賣官**在根據本段行使酌情權，在拍賣完成後決定取消出售一件**拍賣品**，或是將**拍賣品**重新拍賣或出售，**拍賣官**最遲將在拍賣日後第 7 個日曆日結束前通知成功競投人。**拍賣官**有最終決定權。本段不在任何情況下影響佳士得依據本業務規定中任何其他適用規定，包括第 B(3)，E(2)(i)，F(4) 及 J(1) 段中所列的取消權，取消出售一件**拍賣品**的權利。

4. 競投

拍賣官接受以下競投：

- (a) 拍賣會場參與競投的競投人；
- (b) 從電話競投人，通過 Christie's Live™（如第 B6 部分所示）透過網絡競投的競投人；
- (c) 拍賣之前提交佳士得的書面競投（也稱為不在場競投或委託競投）。

5. 代表賣方競投

拍賣官可選擇代表賣方競投的方式連續競投或以回應其他競投者的投標而競投的方式，直

至達到**底價**以下。**拍賣官**不會特別指明此乃代表賣方的競投。**拍賣官**不會代表賣方作出相等於或高於**底價**之出價。就不設**底價**的**拍賣品**，**拍賣官**通常會以**低價估價**的 50% 開始拍賣。如果在此價位沒有人競投，**拍賣官**可以自行斟酌將價格下降繼續拍賣，直至有人競投，然後從該價位向上拍賣。如果無人競投該**拍賣品**，**拍賣官**可視該**拍賣品**為流拍**拍賣品**。

6. 競投價遞增幅度

競投通常從低於**低價估價**開始，然後逐步增加（競投價遞增幅度）。**拍賣官**會自行決定競投開始價位及遞增幅度。本日錄內的書面競投表格上顯示的是一般遞增幅度，僅供閣下參考。

7. 貨幣兌換

拍賣會的顯示板，Christie's Live™ 和佳士得網站可能會以拍賣會當地貨幣外的主要貨幣來展示競投。任何佳士得使用的兌換率僅作指引，佳士得並不受其約束。對於在提供該服務出現的任何錯誤（人為或其它），遺漏或故障，佳士得並不負責。

8. 成功競投

除非**拍賣官**決定使用以上 C3 段中的酌情權，**拍賣官**下槌即表示對最終競投價之接受。這代表賣方和成功競投人之間的買賣合約之訂立。我們僅向已登記的成功競投人開具發票。拍賣後我們會以郵寄及 / 或電子郵件方式發送發票，但我們並不負責通知閣下競投是否成功。如果您以書面競投，拍賣後您應儘快以電話聯繫我們或親臨本公司查詢競投結果，以避免產生不必要的倉儲費用。

9. 競投地法律

當您在我們的拍賣中競投時，您同意您會嚴格遵守所有在拍賣時生效並適用於相關拍賣場所的當地法律及法規。

D. 買方酬金及稅款

1. 買方酬金

成功競投人除支付**落槌價**外，亦同意支付本公司以該**拍賣品**落槌價計算的**買方酬金**。酬金費率按每件**拍賣品**落槌價首港幣 7,500,000 元之 26%；加逾港幣 7,500,000 元以上至港幣 50,000,000 元部分之 21%；加逾港幣 50,000,000 元以上之 15% 計算。

2. 稅費

成功競投者將負責所有適用**拍賣品**稅費，包括增值稅，銷售或補償使用稅費或者所有基於**落槌價**和**買方酬金**而產生的該等稅費。買方有責任查明並支付所有應付稅費。在任何情況下香港法律先決適用。佳士得建議您徵詢獨立稅務意見。

有關佳士得運送至美國的**拍賣品**，不論買方國籍或公民身份，均可能須支付基於**落槌價**，**買方酬金**和 / 或與**拍賣品**相關的其他費用而產生的州銷售稅或使用稅費。佳士得將根據法律要求收取銷售稅。適用銷售稅率由**拍賣品**將運送到的州分，縣，地點而決定。要求豁免銷售稅的成功競投人必須在提取**拍賣品**之前向佳士得提供適當文件。佳士得不須收取稅費的州分，成功競投人可能須繳付稅費予該州分的稅務機構。佳士得建議您徵詢獨立稅務意見。

E. 保證

1. 賣方保證

對於每件**拍賣品**，賣方保證其：

- 為**拍賣品**的所有人，或**拍賣品**的共有人之一並獲得其他共有人的許可；或者，如果賣方不是**拍賣品**的所有人或共有人之一，其已獲得所有人的授權出售**拍賣品**或其法律上有權這麼做；
- 有權利將**拍賣品**的所有權轉讓給買方，且該權利不負擔任何限制或任何其他人的索賠權。

如果以上任何保證不確實，賣方不必支付超過您已向我們支付的**購買款項**（詳見以下第F1(a)段定義）的金額。賣方不會就閣下利潤上或經營的損失、預期存款、商機喪失或利息的損失、成本、賠償金、**其他賠償**或支出承擔責任。賣方不就任何**拍賣品**提供任何以上列舉之外的**保證**；只要法律許可，所有賣方對您做出的**保證**及法律要求加入本協議的所有其它賣方責任均被免除。

2. 真品保證

在不抵觸以下條款的情況下，本公司保證我們拍賣的**拍賣品**都是**真品**（我們的“**真品保證**”）。如果在拍賣日後的五年內，您通知我們您的**拍賣品**不是**真品**，在符合以下條款規定之下，我們將把您支付的**購買款項**退還給您。業務規定的詞匯表裏有對“**真品**”一詞做出解釋。**真品保證**條款如下：

- 我們對在拍賣日後 5 年內提供的申索通知提供**真品保證**。此期限過後，我們不再提供**真品保證**。
- 我們只會對本**目錄描述**第一行（“**標題**”）以大階字體注明的資料作出**真品保證**。除了**標題**中顯示的資料，我們不對任何**標題**以外的資料（包括**標題**以外的大階字體注明）作出任何**保證**。
- 真品保證**不適用於有**保留標題**或任何有保留的部分**標題**。有**保留**是指受限於**拍賣品目錄描述**內的解釋，或者**標題**中有“重要通告及目錄編列方法之說明”內有**保留標題**的某些字眼。例如：**標題**中對“認為是...之作品”的使用指佳士得認為**拍賣品**可能是某位藝術家的作品，但是佳士得不**保證**該作品一定是該藝術家的作品。在競投前，請閱畢“有**保留標題**”列表及**拍賣品**的**目錄描述**。
- 真品保證**適用於被**拍賣會通告**修訂後的**標題**。
- 真品保證**不適用於在拍賣之後，學術發展導致被普遍接受的學者或專家意見有所改變。此**保證**亦不適用於在拍賣日時，**標題**符合被普遍接受的學者或專家的意見，或**標題**指出意見衝突的地方。
- 如果**拍賣品**只有通過科學鑒定方法才能鑒定出不是**真品**，而在我們出版目錄之日，該科學方法還未存在或未被普遍接納，或價格太昂貴或不實際，或者可能損壞**拍賣品**，則**真品保證**不適用。
- 真品保證**僅適用於**拍賣品**在拍賣時由佳士得發出之發票之原本買方，且僅在申索通知做出之日原本買方是**拍賣品**的唯一所有人，且**拍賣品**不受其他申索權、權利主張或任何其他制約的限制。此**真品保證**中的利益不可以轉讓。
- 要申索**真品保證**下的權利，您必須：
 - 在拍賣日後 5 年內，向我們提供書面的申索通知。我們可以要求您提供上述申索完整的細節及佐證證據；
 - 佳士得有權要求您提供為佳士得及

您均事先同意的在此**拍賣品**領域被認可的兩位專家的書面意見，確認該**拍賣品**不是**真品**。如果我們有任何疑問，我們保留自己支付費用獲取更多意見的權利；及

- 自費交回與拍賣時狀況相同的**拍賣品**給佳士得拍賣場。
- 您在**真品保證**下唯一的權利就是取消該項拍賣及取回已付的**購買款項**。在任何情況下我們不須支付您超過您已向我們支付的**購買款項**的金額，同時我們也無須對任何利潤或經營損失、商機或價值喪失、預期存款或利息、成本、賠償金或**其他賠償**或支出承擔責任。
 - 書籍**。如果**拍賣品**為書籍，我們提供額外自拍賣日起為期 14 天的**保證**，如經校對後，**拍賣品**的文本或圖標存有瑕疵，在以下條款的規限下，我們將退回已付的**購買款項**：
 - 此額外**保證**不適用於：
 - 缺少空白頁、扉頁、保護頁、廣告、及書籍鑲邊的破損、污漬、邊緣磨損或其它不影響文本及圖標完整性的瑕疵；
 - 繪圖、簽名、書信或手稿；帶有簽名的照片、音樂唱片、地圖冊、地圖或期刊；
 - 沒有標題的書籍；
 - 沒有標明**估價**的已出售**拍賣品**；
 - 目錄中表明售出後不可退貨的書籍；
 - 狀況**報告中或拍賣時公告的瑕疵。
 - 要根據本條規定申索權利，您必須在拍賣後的 14 天內就有關瑕疵提交書面通知，並交回與拍賣時狀況相同的**拍賣品**給當時進行拍賣的佳士得拍賣行。
 - 東南亞現代及當代藝術以及中國書畫**。**真品保證**並不適用於此類別**拍賣品**。目前學術界不容許對此類別作出確實之說明，但佳士得同意取消被證實為贗品之東南亞現代及當代藝術以及中國書畫**拍賣品**之交易。已付之**購買款項**則根據佳士得**真品保證**的條款退還予原本買方，但買方必須在拍賣日後 12 個月內，向我們提供書面的申索通知。我們可以要求您提供上述申索完整的細節及佐證證據。買方需按以上 E2(h)(ii) 的規定提供令佳士得滿意的證據，證實該**拍賣品**為贗品，及須按照以上 E2(h)(iii) 規定交回**拍賣品**給我們。E2(b), (c), (d), (e), (f), (g) 和 (i) 適用於此類別之申索。
 - 中國、日本及韓國工藝品（中國、日本及韓國書畫、版畫、素描及珠寶除外）**。以上 E2(b) - (e) 在此類別**拍賣品**將作修改如下。當創作者或藝術家未有列明時，我們不僅為**標題**作出**真品保證**，並會對本**目錄描述**第二行以大階字體注明的有關日期或時期的資料提供**真品保證**（“**副標題**”）。以上 E2(b) - (e) 所有提及**標題**之處應被理解為**標題**及**副標題**。

F. 付款

1. 付款方式

- 拍賣後，您必須立即支付以下**購買款項**：
 - 落槌價；和
 - 買方酬金；和
 - 任何關稅、有關貨物、銷售、使用、補償或服務稅項。
- 所有款項須於拍賣後 7 個日曆天內悉數付清（“**到期付款日**”）。

- 我們只接受登記競投人付款。發票一旦開具，發票上買方的姓名不能更換，我們亦不能以不同姓名重新開具發票。即使您欲將**拍賣品**出口且需要出口許可證，您也必須立即支付以上款項。

- 在香港佳士得購買的**拍賣品**，您必須按照發票上顯示的貨幣以下列方式支付：

- 佳士得通過“MyChristie’s”網上賬戶為客人提供查看發票、付款及運送服務。您可直接登錄查詢（如您還未註冊線上賬戶，請登錄 www.christies.com/MyChristies 進行註冊）。本服務適用於大多數**拍賣品**，但仍有少數**拍賣品**的付款和運送安排不能通過網上進行。如需協助，請與售後服務部聯絡。

- 電匯至：

香港上海匯豐銀行總行
香港中環皇后大道中 1 號
銀行編號：004
賬號：062-305438-001
賬名：Christie’s Hong Kong Limited
收款銀行代號：HSBCHKHHHKH

- 信用卡

在符合我們的規定下，我們接受各種主要信用卡付款。本公司每次拍賣接受總數不超過港幣 1,000,000 元之現場信用卡付款，但有關條款及限制適用。以中國銀聯支付方式沒有金額限制。如要以“持卡人不在場”（CNP）的方式支付，本公司每次拍賣接受總數不超過港幣 1,000,000 元之付款。CNP 付款不適用於所有佳士得拍賣場，並受某些限制。適用於信用卡付款的條款和限制可從佳士得的售後服務部獲取，詳情列於以下 (d) 段：

- 現金

本公司每年只接受每位買方總數不超過港幣 80,000 元之現金付款（須受有關條件約束）；

- 銀行匯票

抬頭請註明「佳士得香港有限公司」（須受有關條件約束）；

- 支票

抬頭請註明「佳士得香港有限公司」。支票必須於香港銀行承兌並以港幣支付。

- 支付時請註明拍賣號碼、發票號碼及客戶號碼；以郵寄方式支付必須發送到：佳士得香港有限公司，售後服務部（地址：香港中環遮打道 18 號歷山大廈 22 樓）。

- 如要瞭解更多信息，請聯繫售後服務部。電話 +852 2760 1766 或發電郵至 postsaleasia@christies.com。

2. 所有權轉移

只有我們自您處收到全額且清算**購買款項**後，您才擁有**拍賣品**及**拍賣品**的所有權，即使本公司已將**拍賣品**交給您。

3. 風險轉移

拍賣品的風險和責任自以下日期起將轉移給您（以較早者為準）：

- 買方提貨日；

- (b) 自拍賣日起 31 日後，如較早，則**拍賣品**由第三方倉庫保管之日起；除非另行協議。

4. 不付款之補救辦法

- (a) 如果**到期付款日**，您未能全數支付**購買款項**，我們將有權行使以下一項或多項（及執行我們在 F5 段的權利以及法律賦予我們的其它權利或補救辦法）：

(i) **自到期付款日**起，按照尚欠款項，收取高於香港金融管理局不時公布的三個月銀行同業拆息加 7% 的利息；

(ii) 取消交易並按照我們認為合適的條件對**拍賣品**公開重新拍賣或私下重新售賣。您必須向我們支付原來您應支付的**購買款項**與再次轉賣收益之間的差額。您也必須支付我們必須支付或可能蒙受的一切成本、費用、損失、賠償，法律費用及任何賣方酬金的差額；

(iii) 代不履行責任的買方支付賣方應付的拍賣淨價金額。您承認佳士得有賣方之所有權利向您提出追討。

(iv) 您必須承擔尚欠之**購買款項**，我們可就取回此金額而向您提出法律訴訟程序及在法律許可下向您索回之其他損失、利息、法律費用及其他費用；

(v) 將我們或**佳士得集團**任何公司欠下您之款項（包括您已付給我們之任何保證金或部分付款）用以抵銷您未付之款項；

(vi) 我們可以選擇將您的身份及聯繫方式披露給賣方；

(vii) 在將來任何拍賣中，不允許您或您的代表作出競投，或在接受您競投之前向您收取保證金；

(viii) 在**拍賣品**所處地方之法律許可之下，佳士得就您擁有並由佳士得管有的**拍賣品**作為抵押品並以抵押品持有人身份行使最高程度之權利及補救方法，不論是以典當方式、抵押方式或任何其他形式。您則被視為已授與本公司該等抵押及本公司可保留或售賣此物品作為買方對本公司及賣方的附屬抵押責任；和

(ix) 採取我們認為必要或適當的任何行動。

- (b) 將您已付的款項，包括保證金及其他部份付款或我們欠下您之款項用以抵銷您欠我們或其他**佳士得集團**公司的款項。

- (c) 如果您在**到期付款日**之後支付全部款項，同時，我們選擇接受該付款，我們可以自拍賣後第 31 日起根據 G(d)(i) 及 (ii) 段向您收取倉儲和運輸費用。在此情況下，G(d)(iv) 段將適用。

5. 扣押拍賣品

如果您欠我們或其他**佳士得集團**公司款項，除了以上 F4 段的權利，在法律許可下，我們可以以任何方式使用或處置您存於我們或其它**佳士得集團**公司的**拍賣品**。只有在您全額支付欠下我們或相關**佳士得集團**公司的全部款項後，您方可領取有關**拍賣品**。我們亦

可選擇將您的**拍賣品**按照我們認為適當的方式出售。我們將用出售**拍賣品**的銷售所得來抵銷您欠下我們的任何款項，並支付您任何剩餘部分。如果銷售所得不足以抵扣，您須支付差額。

G. 提取及倉儲

- (a) 我們要求您在拍賣之後立即提取您購買的**拍賣品**（但請注意，在全數付清所有款項之前，您不可以提取**拍賣品**）。

(b) 有關提取**拍賣品**之詳情，請聯繫售後服務部。電話 +852 2760 1766 或發電郵至：postsaleasia@christies.com

(c) 如果您未在拍賣完畢立即提取您購買的**拍賣品**，我們有權將**拍賣品**移送到其他佳士得所在處或其關聯公司或第三方倉庫。

(d) 如果您未在拍賣後第三十日曆日或之前提取您購買的**拍賣品**，除非另有書面約定：

(i) 我們或第三方倉庫將自拍賣後第 31 日起向您收取倉儲費用。

(ii) 我們有權將**拍賣品**移送到關聯公司或第三方倉庫，並且我們或第三方可向您收取因此產生的運輸費用和處理費用。

(iii) 我們可以按我們認為商業上合理且恰當的方式出售**拍賣品**。

(iv) 倉儲的條款適用，條款請見 www.christies.com/storage。

(v) 本段的任何內容不限制我們在 F4 段下的權利。

H. 運送

1. 運送

運送或付運表格會與發票一同發送給您。您須自行安排**拍賣品**的運送和付運事宜。我們也可以依照您的要求安排包裝運送及付運事宜，但您須支付有關收費。我們建議您在競投前預先查詢有關收費的估價，尤其是需要專業包裝的大件物品或高價品。應您要求，我們也可建議處理員、包裝、運輸公司或有關專家。

詳情請聯繫佳士得售後服務部，電話：+852 2760 1766 或發郵件至 postsaleasia@christies.com。我們會合理謹慎處理、包裝、運輸**拍賣品**。若我們就上述目的向您推薦任何其他公司，我們不會承擔有關公司之行為，遺漏或疏忽引致的任何責任。

2. 出口 / 進口

拍賣售出的任何**拍賣品**都可能受**拍賣品**售出國家的出口法律及其他國家的進口法律限制。許多國家就**拍賣品**出境要求出口聲明及 / 或就**拍賣品**入境要求進口聲明。進口國當地法律可能會禁止進口某些**拍賣品**或禁止**拍賣品**在進口國出售。

我們不會因您所購買的**拍賣品**無法出口，進口或出於任何原因遭政府機構沒收而有責任取消您的購買或向您退換**購買款項**。您應負責確認並滿足任何法律或法規對出口或進口您購買的**拍賣品**的要求。

- (a) 在競投前，您應尋求專業意見並負責滿足任何法律或法規對出口或進口**拍賣品**的要求。如果您被拒發許可證，或申請許可證延誤，您仍須全數支付**拍賣品**的價款。如果您提出請求，在我們能力範圍許可內，我們可以協助您申請所需許

可證，但我們會就此服務向您收取費用。我們不保證必能獲得許可證。如欲了解詳情，請聯繫佳士得售後服務部，電話：+852 2760 1766 或發郵件至 postsaleasia@christies.com。

- (b) 你應負責支付與**拍賣品**出口或進口有關的所有適用稅費、關稅或其他政府徵收的費用。如果佳士得為您出口或進口**拍賣品**，且佳士得支付了上述適用的稅費、關稅或其他政府徵收的費用，您同意向佳士得退還該筆費用。

(c) 含有受保護動植物物的**拍賣品**

由瀕臨絕種及其他受保護野生動植物製造或組成（不論百分比率）的**拍賣品**在本目錄中註有 [~] 號。這些物料包括但不限於象牙、玳瑁殼、鱷魚皮、犀牛角、鯨骨、某些珊瑚品種及玫瑰木。若您有意將含有野生動物物料的任何**拍賣品**進口至其他國家，您須於競投該**拍賣品**之前了解有關海關法例和規定。有些國家完全禁止含有這類物料的物品進口，而其他國家則規定須向出口及入口國家的有關管理機構取得許可證。在有些情況下，**拍賣品**必須附有獨立的物種的科學證明和 / 或年期證明，方能裝運，而您須要自行安排上述證明並負責支付有關的費用。如果一件**拍賣品**含有象牙或其他可能和象牙相混淆的野生動物材料（例如猛犸象牙，海象象牙和犀鳥象牙）且您計劃將上述**拍賣品**進口到美國，請查看 (c) 段中之重要信息。如果您無法出口，進口該**拍賣品**或因任何原因**拍賣品**被政府部門查收，我們沒有義務因此取消您的交易並退回您的**購買款項**。您應負責確定並滿足有關含有上述物料**拍賣品**進出口的法律和規例要求。

(d) 美國關於非洲象象牙的進口禁令

美國禁止非洲象象牙進口美國。如果一件**拍賣品**含有象牙或其他可能和象牙相混淆的野生材料（例如猛犸象牙，海象象牙和犀鳥象牙），其必須通過受美國漁業和野生動物保護局認可的嚴格科學測試確認該物料非非洲象象牙後方可進口美國。如果我們在拍賣前對**拍賣品**已經進行了該嚴格科學測試，我們會在**拍賣品**陳述中清楚表明。我們一般無法確認相關**拍賣品**的象牙是否來自非洲象。您凡購買有關**拍賣品**並計畫將有關**拍賣品**進口美國，必須承擔風險並負責支付任何科學測試或其他報告的費用。有關測試並無定論或確定物料乃非洲象象牙，不被視為取消拍賣和退回**購買款項**的依據。

(e) 源自伊朗的**拍賣品**

一些國家禁止或限制購買和 / 或進出口源自伊朗的“傳統工藝作品”（身份不明確的藝術家作品及 / 或功能性作品。例如：地毯、碗、大口水壺、瓷磚和裝飾盒）。美國禁止進口以上物品亦禁止美國民眾（不論所在處）購買以上物品。有些國家，例如加拿大則允許在某特定情況下可以進口上述物品。為方便買方，佳士得在源自伊朗（波斯）的**拍賣品**下方特別注明。如您受以上制裁或買

易禁運限制，您須確保您不會競投或進口有關**拍賣品**，違反有關適用條例。

(f) **黃金**

含量低於 18k 的黃金並不是在所有國家均被視為「黃金」，並可能被拒絕入口。

(g) **鐘錶**

本目錄內有些錶帶的照片顯示該手錶配有瀕危及受保護動物（如短吻鱷或鱷魚）的物料所製成的錶帶。這些**拍賣品**在本目錄內的**拍賣品**編號旁以 **Ψ** 符號顯示。這些錶帶只用來展示**拍賣品**並不作銷售用途。在運送手錶到拍賣地以外的地點前，佳士得會把上述錶帶拆除並予以保存。買方若在拍賣後一年內親身到拍賣所在地的佳士得提取，佳士得可酌情免費提供該展示用但含有瀕危及受保護動物物料的錶帶給買方。

H2 段中的標記是佳士得為了方便閣下而在有關**拍賣品**附加的，附加標記時如有任何錯誤或遺漏，佳士得恕不承擔任何責任。

I. **佳士得之法律責任**

- (a) 除了**真品保證**，佳士得、佳士得代理人或僱員，對任何**拍賣品**作任何陳述，或資料的提供，均不作出任何**保證**。在法律容許的最大程度下，所有由法律附加的**保證**及其他條款，均被排除在本協議外。在 E1 段中的賣方**保證**是由賣方提供的**保證**，我們對這些**保證**不負有任何責任。
- (b) (i) 除非我們以欺詐手段作出有欺詐成份的失實陳述或在本業務規定中另有明確說明，我們不會因任何原因對您負有任何責任（無論是因違反本協議，購買**拍賣品**或與競投相關的任何其它事項）；和
(ii) 本公司無就任何**拍賣品**的可商售品質、是否適合某特定用途、描述、尺寸、質量、**狀況**、作品歸屬、真實性、稀有程度、重要性、媒介、來源、展覽歷史、文獻或歷史的關聯等作出任何陳述、**保證**或擔保或承擔任何責任。除非當地的法律強制要求，任何種類之任何**保證**，均被本段排除在外。
- (c) 請注意佳士得所提供的書面競投及電話競投服務、Christie's Live™ **狀況**報告、貨幣兌換顯示板及拍賣室錄像影像為免費服務，如有任何錯誤（人為或其它原因）、遺漏或故障或延誤、未能提供、暫停或終止，本公司不負任何責任。
- (d) 就**拍賣品**購買的事宜，我們僅對買方負有法律責任。
- (e) 如果儘管有 (a) 至 (d) 或 E2(i) 段的規定，我們因某些原因須對您負上法律責任，我們不須支持超過您已支付的**購買款項**。佳士得不須就任何利潤或經營損失、商機喪失或價值、預期存款或利息、費用、**其他賠償**或支出等原因負上任何責任。

J. **其它條款**

1. 我們的撤銷權

除了本協議中的其他撤銷權利，如果我們合理地認為完成交易可能是違法行為或該銷售會令我們或賣方向任何人負上法律責任或損

壞我們的名聲，我們可取消該**拍賣品**的拍賣。

2. 錄像

我們可以錄影及記錄拍賣過程。除非按法律要求，我們會對個人信息加以保密。該資料可能用於或提供其他**佳士得集團**公司和市場夥伴以作客戶分析或以便我們向買方提供合適的服務。若您不想被錄影，您可透過電話或書面競投或在 Christie's Live™ 競投。除非另有書面約定，您不能在拍賣現場錄像或錄音。

3. 版權

所有由佳士得或為佳士得與**拍賣品**有關之製作之一切圖片、插圖與書面資料（除有特別註釋外，包括我們的目錄的內容）之版權均屬於佳士得所有。沒有我們的事先書面許可不得使用以上版權作品。我們沒有保證您就投得的**拍賣品**會取得任何版權或其他複製的權利。

4. 效力

如本協議的任何部份遭任何法院認定為無效、不合法或無法執行，則該部分應被視為刪除，其它部分不受影響。

5. 轉讓您的權利及責任

除非我們給予書面許可，否則您不得就您在本協議下的權利或責任設立任何抵押，亦不得轉讓您的權利和責任。本協議對您的繼任人、遺產及任何承繼閣下責任的人具有約束力。

6. 翻譯

如果我們提供了本協議的翻譯件，我們將會使用英文版用於解決本協議項下產生的任何問題以及爭議。

7. 個人信息

您同意我們將持有並處理您的個人數據或信息，並將其交給其它**佳士得集團**公司用於我們的私隱政策所描述的，或與其相符的目的。您可以在 www.christies.com 上找到本公司私隱政策。如您是加利福尼亞州居民，您可在 <https://www.christies.com/about-us/contact/ccpa> 看到我們的《加州消費者隱私法》（California Consumer Privacy Act）聲明。

8. 棄權

未能或延遲行使本業務規定下的權利或補償不應被視為免除該權利或補償，也不應阻止或限制對該權利或補償或其他權利或補償的行使。單獨或部分行使該權利或補償不應阻止或限制對其它權利或補償的行使。

9. 法律及管轄權

各方的權利及義務，就有關本業務規定，拍賣的行為及任何與上述條文的事項，均受香港法律管轄及根據香港法律解釋。在拍賣競投時，無論是親自出席或由代理人出席競投，書面、電話及其它媒体競投，買方則被視為接受本業務規定，及為佳士得之利益而言，接受香港法院之排他性管轄權，並同時接納佳士得亦有權在任何其他司法管轄區提出索償，以追討買方拖欠的任何款項。

10. www.christies.com 的報告

售出的**拍賣品**的所有資料，包括**目錄描述**及**價款**都可在 www.christies.com 上查閱。銷售總額為**落槌價**加上**買方酬金**，其不反映成本、財務費用或買方或賣方信貸

申請情況。我們不能按要求將這些資料從 www.christies.com 網站上刪除。

K. **詞匯表**

拍賣官：個人拍賣官和 / 或佳士得。

真品：以下所述的真實作品，而不是複製品或贗品：

- (a) **拍賣品**在**標題**被描述為某位藝術家、作者或製作者的作品，則為該藝術家、作者或製造者的作品；
- (b) **拍賣品**在**標題**被描述為是某時期或流派創作的作品，則該時期或流派的作品；
- (c) **拍賣品**在**標題**被描述為**某來源**，則為該來源的作品；
- (d) 以寶石為例，如**拍賣品**在**標題**被描述為由某種材料製成，則該作品是由該材料製成。

真品保證：我們在本協議 E2 段所詳述為**拍賣品**提供的保證。

買方酬金：除了**落槌價**，買方支付給我們的費用。

目錄描述：拍賣目錄內對**拍賣品**的陳述（包括於拍賣場通過對有關陳述作出的任何更改）。

佳士得集團：Christie's International Plc、其子公司及集團的其它公司。

狀況：**拍賣品**的物理狀況。

到期付款日：如第 F1(a) 段所列出的意思。

估價：目錄中或拍賣場通告中列明的我們認為**拍賣品**可能出售的價格範圍。**低端估價**指該範圍的最低價；**高端估價**指該範圍的最高價。**中間估價**為兩者的中間點。

落槌價：**拍賣官**接受的**拍賣品**最高競投價。**標題**：如 E2 段所列出的意思。

拍賣品：供拍賣的一件**拍賣品**（或作為一組拍賣的兩件或更多的物件）。

其他賠償：任何特殊、連帶、附帶或間接的賠償或任何符合當地法律規定的“特殊”、“附帶”或“連帶”賠償。

購買款項：如第 F1(a) 段的意思。

來源：**拍賣品**的所有權歷史。

有保留：如 E2 段中的意思；**有保留標題**則指目錄中“重要通知和目錄編制說明”頁中的“**有保留標題**”的意思。

底價：**拍賣品**不會以低於此保密密底價出售。

拍賣場通告：張貼位於拍賣場內的**拍賣品**旁或 www.christies.com 的書面通知（上述通知內容會另行通知以電話或書面競投的客戶），或拍賣會舉行前或拍賣某**拍賣品**前**拍賣官**宣布的公告。

副標題：如 E2 段所列出的意思。

大階字體：指包含所有的大寫字母。

保證：陳述人或聲明人保證其所陳述或聲明的事實為正確。

SYMBOLS USED IN THIS CATALOGUE

The meaning of words coloured in **bold** in this section can be found at the end of the section of the catalogue headed 'Conditions of Sale - Buying at Christie's'

- Christie's has a direct financial interest in the **lot**. See Important Notices and Explanation of Cataloguing Practice.
- △ Property in which Christie's or another **Christie's Group** company has an ownership or financial interest. See Important Notices and Explanation of Cataloguing Practice.
- ◆ Christie's has a direct financial interest in the **lot** and has funded all or part of our interest with the help of someone else. See Important Notices and Explanation of Cataloguing Practice.
- ✘ A party with a direct or indirect interest in the **lot** who may have knowledge of the **lot's reserve** or other material information may be bidding on the **lot**.
- **Lot** offered without **reserve** which will be sold to the highest bidder regardless of the pre-sale estimate in the catalogue.
- **Lot** incorporates material from endangered species which could result in export restrictions. See Section H2(b) of the Conditions of Sale - Buying at Christie's.
- Ψ The endangered species strap is shown for display purposes only and is not for sale. Upon sale, this watch may be supplied to the buyer with a non CITES strap (not shown). For further information please refer to the Conditions of Sale

Please note that **lots** are marked as a convenience to you and we shall not be liable for any errors in, or failure to, mark a **lot**.

本目錄中使用的各類標識

本部份粗體字體詞語的涵義載於本目錄中題為“業務規定·買方須知”一章的最後一頁。

- 佳士得對該**拍賣品**擁有直接經濟利益。請參閱重要通知及目錄編列方法之說明。
- △ 佳士得或其他**佳士得集團**公司對該拍賣品持有所有權或經濟利益。請參閱重要通知及目錄編列方法之說明。
- ◆ 佳士得對該**拍賣品**擁有直接經濟利益，佳士得的全部或部分利益通過第三方融資。請參閱重要通知及目錄編列方法之說明。
- ✘ 對該**拍賣品**有直接或間接經濟利益的一方有可能對該**拍賣品**作出競投，其可能知道該**拍賣品**的**底價**或其他重要資訊。
- 不設**底價**的**拍賣品**，不論其在本目錄中的**售前估價**，該**拍賣品**將售賣給出價最高的競投人。
- **拍賣品**含有瀕危物種的材料，可能受出口限制。請參閱業務規定·買方須知第 H2(b) 段。
- Ψ 瀕危物種錶帶只用作展示用途並不作銷售。出售后，此手錶或會配以不受瀕危野生動植物種國際貿易公約所管制的錶帶（未有展示）以提供予買家。請參閱業務規定以獲取進一步資料。

請注意對藏品的標記僅為您提供方便，本公司不承擔任何因標示錯誤或遺漏標記的責任。

IMPORTANT NOTICES AND EXPLANATION OF CATALOGUING PRACTICE

IMPORTANT NOTICES

CHRISTIE'S INTEREST IN PROPERTY CONSIGNED FOR AUCTION

△ Property in which Christie's or another Christie's Group company has an ownership or financial interest

From time to time, Christie's may offer a lot in which Christie's or another **Christie's Group** company has an ownership or financial interest. Such property is identified in the catalogue with the symbol **△** next to its lot number. Where Christie's has an ownership or financial interest in every lot in the catalogue, Christie's will not designate each lot with a symbol, but will state its interest in the front of the catalogue.

◦ Minimum Price Guarantees:

On occasion, Christie's has a direct financial interest in the outcome of the sale of certain lots consigned for sale. This will usually be where it has guaranteed to the Seller that whatever the outcome of the auction, the Seller will receive a minimum sale price for the work. This is known as a minimum price guarantee. Where Christie's holds such financial interest we identify such lots with the symbol **◦** next to the lot number.

◦◆ Third Party Guarantees/ Irrevocable bids

Where Christie's has provided a Minimum Price Guarantee, it is at risk of making a loss, which can be significant if the lot fails to sell. Christie's therefore sometimes chooses to share that risk with a third party who agrees prior to the auction to place an irrevocable written bid on the lot. If there are no other higher bids, the third party commits to buy the lot at the level of their irrevocable written bid. In doing so, the third party takes on all or part of the risk of the lot not being sold. Lots which are subject to a third party guarantee arrangement are identified in the catalogue with the symbol **◦◆**.

Christie's compensates the third party in exchange for accepting this risk provided that the third party is not the successful bidder. The remuneration to the third party may either be based on a fixed fee or an amount calculated against the final hammer price. The third party may also bid for the lot above the irrevocable written bid. Where the third party is the successful bidder, the third party is required to pay the hammer price and the buyer's premium in full.

Third party guarantors are required by us to disclose to anyone they are advising their financial interest in any lots they are guaranteeing. However, for the avoidance of any doubt, if you are advised by or bidding through an agent on a lot identified as being subject to a third party guarantee you should always ask your agent to confirm whether or not he or she has a financial interest in relation to the lot.

✘ Bidding by parties with an interest

When a party with a direct or indirect interest in the lot who may have knowledge of the lot's reserve or other material information may be bidding on the lot, we will mark the lot with this symbol **✘**. This interest can include beneficiaries of an estate that consigned the lot or a joint owner of a lot. Any interested party that successfully bids on a lot must comply with Christie's Conditions of Sale, including paying the lot's full buyer's premium plus applicable taxes.

Post-catalogue notifications

If Christie's enters into an arrangement or becomes aware of bidding that would have required a catalogue symbol, we will notify you by updating christies.com with the relevant information (time permitting) or otherwise by a pre-sale or pre-**lot** announcement.

Other Arrangements

Christie's may enter into other arrangements not involving bids. These include arrangements where Christie's has advanced money to consignors or prospective purchasers or where Christie's has shared the risk of a guarantee with a partner without the partner being required to place an irrevocable written bid or otherwise participating in the bidding on the lot. Because such arrangements are unrelated to the bidding process they are not marked with a symbol in the catalogue.

Please see <http://www.christies.com/financial-interest/> for a more detailed explanation of minimum price guarantees and third party financing arrangements.

EXPLANATION OF CATALOGUING PRACTICE

Terms used in a catalogue or lot description have the meanings ascribed to them below. Please note that all statements in a catalogue or lot description as to authorship, period, reign or dynasty are made subject to the provisions of the Conditions of Sale, including the **authenticity warranty**. Our use of these expressions does not take account of the condition of the lot or of the extent of any restoration. Buyers are advised to inspect the property themselves. Written condition reports are usually available on request.

A term and its definition listed under 'Qualified Headings' is a qualified statement as to authorship, period, reign or dynasty. While the use of this term is based upon careful study and represents the opinion of specialists, Christie's and the consignor assume no risk, liability and responsibility for the authenticity of authorship or of the lot being created in certain period, reign or dynasty of any lot in this catalogue

described by this term, and the **authenticity warranty** shall not be available with respect to lots described using this term.

Discrepancy in the layout of information may appear between the catalogue description in English and its Chinese translation. We will use the English version of the catalogue description in deciding any issue or disputes which arise under the **authenticity warranty** or the 'Qualified Headings'.

CHINESE CERAMICS AND WORKS OF ART

- In Christie's opinion a work by the maker or artist e.g. A YIXING TEAPOT BY CHEN MINGYUAN KANGXI PERIOD (1662-1722)
- When a piece is, in Christie's opinion, of a certain period, reign or dynasty, its attribution appears in uppercase letters directly below the heading of the description of the lot. e.g. A BLUE AND WHITE BOWL QING DYNASTY, 18TH CENTURY
- If the date, period or reign mark mentioned in uppercase letters directly below the heading of

the description of the lot states that the mark is of the period, then in Christie's opinion, the piece is of the date, period or reign of the mark.

- e.g. A BLUE AND WHITE BOWL KANGXI SIX-CHARACTER MARK IN UNDERGLAZE BLUE AND OF THE PERIOD (1662-1722)
- When a piece is, in Christie's opinion, made no later than a certain period, reign or dynasty, its attribution appears in uppercase letters directly below the heading of the description of the lot and the term "AND EARLIER" appears. e.g. A JADE NECKLACE LIANGZHU CULTURE AND EARLIER, CIRCA 3900-2300 BC
- If no date, period or reign mark is mentioned in uppercase letters directly below the heading of the description of the lot, in Christie's opinion it is of uncertain date or late manufacture. e.g. A BLUE AND WHITE BOWL

QUALIFIED HEADINGS

- When a piece is, in Christie's opinion, not of the

period to which it would normally be attributed on stylistic grounds, this will be incorporated into the first line or the body of the text of the description.

- e.g. A BLUE AND WHITE MING-STYLE BOWL The Ming-style bowl is decorated with lotus scrolls...
- In Christie's qualified opinion, this object could be dated to the Kangxi period but there is a strong element of doubt. e.g. A BLUE AND WHITE BOWL POSSIBLY KANGXI PERIOD
- In Christie's opinion, this object is of a certain period, reign or dynasty. However, in Christie's qualified opinion, this object could belong to a particular culture but there is a strong element of doubt. e.g. A JADE BLADE NEOLITHIC PERIOD, POSSIBLY DAWENKOU CULTURE

重要通知及目錄編列方法之說明

重要通告

佳士得在受委託拍賣品中的權益

△ 佳士得或其他佳士得集團公司對該拍賣品持有所有權或經濟利益

佳士得可能會不時提供其或其他佳士得集團公司持有所有權或經濟利益之拍賣品。該等拍賣品在目錄中於拍賣編號旁註有△符號以資識別。如果佳士得在目錄中每一項拍賣品中均有所有權或經濟利益，佳士得將不會於每一項拍賣品旁附注符號，但會於正文首頁聲明其權益。

◦ 保證最低出售價

佳士得有時就某些受委託出售的拍賣品的拍賣成果持有直接的經濟利益。通常為其向賣方保證無論拍賣的結果如何，賣方將就拍賣品的出售獲得最低出售價。這被稱為保證最低出售價。該等拍賣品在目錄中於拍賣編號旁註有◦號以資識別。

◦◆ 第三方保證 / 不可撤銷的競投

在佳士得已經提供最低出售價保證，如果拍賣品未能出售，佳士得將承擔遭受重大損失的風險。因此，佳士得有時選擇與同意在拍賣之前就該拍賣品提交一份不可撤銷的書面競投的第三方分擔該風險。如果沒有其他更高的競價，第三方承諾將以他們提交的不可撤銷的書面競投價格購買該拍賣品。第三方因此承擔拍賣品未能出售的所有或部分風險。該等拍賣品在目錄中注以符號◦◆以資識別。

第三方需要承擔風險，在自身不是成功競投人的情況下，佳士得將給予酬金給第三方。第三方的酬金可以是固定金額或基於落槌價計算的酬金。第三方亦可以就該拍賣品以超過不可撤銷的書面競投的價格進行競投。如果第三方成功競投，第三方必須全額支付落槌價及買方酬金。

我們要求第三方保證人向其客戶披露在給予保證的拍賣品持有的經濟利益。如果您通過顧問意見或委託代理人競投一件標示為有第三方融資的拍賣品，我們建議您應當要求您的代理人確認他/她是否在拍賣品持有經濟利益。

✠ 利益方的競投

當那些可能獲悉了拍賣品的底價或其他重要信息對拍賣品擁有直接或間接權益的一方可能進行競投時，我們會對該拍賣品附注符號✠。該利益可包括委託出售拍賣品的遺產受益人或者拍賣品的共同所有人之一。任何成

功競得拍賣品的利益方必須遵守佳士得的業務規定，包括全額支付拍賣品的買方酬金及適用的稅費。

目錄出版後通知

如果佳士得達成某種安排或獲悉需要附注目錄符號的競投，我們將通過更新 christies.com 相關信息（在時間允許的情況下）或通過拍賣會舉行前或拍賣某拍賣品前的公告通知您。

其他安排

佳士得可能訂立與競投無關的協議。這些協議包括佳士得向賣方或者潛在買方預付金額或者佳士得與第三方分擔保證風險，但並不要求第三方提供不可撤銷的書面競投或參與拍賣品的競投。因為上述協議與競投過程無關，我們不會在目錄中注以符號。

請登錄 <http://www.christies.com/financial-interest/> 瞭解更多關於最低出售價保證以及第三方融資安排的說明。

目錄編列方法之說明

下列詞語於本目錄或拍賣品描述中具有以下意義。請注意本目錄內或拍賣品描述中有關創作者、時期、統治時期或朝代的所有陳述均在符合本公司之業務規定。買方須知，包括真品保證的條款下作出。該用詞的表達獨立於拍賣品本身的狀況或任何程度的修復。我們建議買方親身檢視拍賣品的狀況。佳士得也可按要提供書面狀況報告。

於本目錄「有保留的標題」下編列方法的詞語及其定義為對拍賣品創作者、時期、統治時期或朝代有所保留的陳述。該詞語之使用，乃依據審慎研究所得之佳士得專家之意見。佳士得及賣方對該詞語及其所陳述的本目錄拍賣品之創作者或拍賣品於某時期、統治時期或朝代內創作的真價，並不承擔任何風險、法律責任和義務。而真品保證條款，亦不適用於以該詞語所描述的拍賣品。

目錄描述中資料的前後編排版面的英文版本與中文翻譯可能出現偏差。我們將會使用英文版本之目錄描述解決真品保證或「有保留的標題」下產生的任何問題以及爭議。

中國瓷器及工藝精品

- 佳士得認為是屬於該創作者或藝術家之作品
例如：A YIXING TEAPOT BY CHEN MINGYUAN KANGXI PERIOD (1662-1722)

當作品描述標題的直接下方以英文大階字體註明作品的歸屬，以佳士得之意見認為，該作品屬於所註明之時期、統治時期或朝代。

- 例如：A BLUE AND WHITE BOWL QING DYNASTY, 18TH CENTURY
- 如日期、時期或統治時期款識出現在作品描述標題的直接下方並以英文大階字體註明款識為屬於某時期，則以佳士得之意見認為，該作品乃款識所示之日期、時期或統治時期之作品。
例如：A BLUE AND WHITE BOWL KANGXI SIX-CHARACTER MARK IN UNDERGLAZE BLUE AND OF THE PERIOD (1662-1722)
- 作品之歸屬以英文大階字體在其標題描述直接下方及以詞語「和更早」註明，以佳士得之意見認為，該作品不遲於該時期、統治時期或朝代創造。
例如：A JADE NECKLACE LIANGZHU CULTURE AND EARLIER, CIRCA 3900-2300 BC
- 在作品描述標題的直接下方沒有以英文大階字體註明日期、時期或統治時期款識之作品，以佳士得之意見認為，該作品之創作日期不詳或屬於較後時期創作的作品。
例如：A BLUE AND WHITE BOWL

有保留的標題

- 以佳士得之意見認為，作品並非自歸屬於基於其風格其通常被認為的時期，此風格將會註明在描述的第一行或描述內容中。
例如：A BLUE AND WHITE MING-STYLE BOWL
The Ming-style bowl is decorated with lotus scrolls...
- 以佳士得有保留之意見認為作品可能或為康熙時期但佳士得對此有強烈懷疑。
例如：A BLUE AND WHITE BOWL POSSIBLY KANGXI PERIOD
- 佳士得認為作品屬於某時期、統治時期或朝代。但以佳士得有保留之意見認為，作品可能屬於某文化但佳士得對此有強烈懷疑。
例如：A JADE BLADE NEOLITHIC PERIOD, POSSIBLY DAWENKOU CULTURE

INTERNATIONAL ASIAN ART DEPARTMENT

GLOBAL MANAGING DIRECTOR

Heidi Yang
Tel: +852 2978 6804

CHINESE CERAMICS & WORKS OF ART

Pola Antebi
Deputy Chairman, Asia Pacific International Director
Tel: +852 2978 9950

Michael Bass
International Director
Tel: +1 212 636 2180

Chi Fan Tsang
Deputy Chairman, Asia Pacific International Director
Tel: +852 2760 1766

BEIJING

Dai Dai
Felix Pei
Tel: +86 (0) 10 8572 7958

HONG KONG

Marco Almeida
Liang-Lin Chen
Timothy Lai
Audrey Lee
Yunhan Sun
Tel: +852 2760 1766

LONDON

Kate Hunt
Tel: +44 207 752 3389

NEW YORK

Vicki Paloympis
Rufus Chen
Michelle Cheng
Margaret Gristina
Lucy Yan
Zhengdong Guo
Tel: +1 212 636 2180

PARIS

Tiphaine Nicoul
Camille de Foresta
Zheng Ma
Carla Trely
Tel: +33 (0)1 40 76 83 75

SAN FRANCISCO

Andrew Lueck
Tel: +1 415 982 0982

SHANGHAI

Sherese Tong
Tel: +86 (0)21 6355 1766

TAIPEI

Ruben Lien
Tel: +886 2 2736 3356

TOKYO

Masahiko Kuze
Tel: +81 (0) 3 6267 1766

CHAIRMAN

Athena Zonars
Deputy Chairman, Americas
Tel: +1 212 636 2177

CHINESE PAINTINGS

Kim Yu
Chairman, International Chinese Paintings
Tel: +852 2760 1766

BEIJING

Michael Xie
Vicky Liu
Tel: +86 (0) 10 8572 7939

HONG KONG

Carmen Shek Cerne
Jessie Or
Jing Jing Qiao
Amy Cheng
Dr Man Kung
Yorkie Tam
Frank Yang
Andy Kang
Tel: +852 2760 1766

NEW YORK

Sophia Zhou
Tel: +1 212 641 5760

TOKYO

Seiji Inami
Tel: +81 (0) 3 6267 1778

SENIOR ADVISOR

Jonathan Stone
Tel: +852 2978 9989

JAPANESE & KOREAN ART

Katsura Yamaguchi
Managing Director, International Director, Asian Art
Tel: +81 (0)3 6267 1766

NEW YORK

Takaaki Murakami
Hua Zhou
Tel: +1 212 636 2160

REGIONAL MANAGING DIRECTORS

Rachel Orkin-Ramey
Tel: +1 212 636 2194

Valeria Severini
Tel: +33 (0)1 40 76 7286

Nicole Wright
Tel: +852 2978 9952

HEADS OF SALE MANAGEMENT

Yanie Choi
Tel: +852 2978 9936

Holly Rittweger
Tel: +1 212 641 7529

Samantha Yuen
Tel: +852 2978 6703

ASIA PACIFIC REGIONAL OFFICES

BANGKOK

Prapavadee Sophonpanich
Tel: +66 (0)2 252 3685

BEIJING

Rebecca Yang
Tel: +86 (0) 10 8583 1766

JAKARTA

Charmie Hamami
Tel: +62 (0)21 7278 6268

KUALA LUMPUR

Charmie Hamami
Tel: +62 (0)21 7278 6268

MUMBAI

Sonal Singh
Tel: +91 222 280 7905

SEOUL

Lee Hak Jun
Tel: +82 2 720 5266

SHANGHAI

Rebecca Yang
Tel: +86 (0)21 6355 1766

SINGAPORE

Kim Chuan Mok
Tel: +65 6735 1766

TAIPEI

Ada Ong
Tel: +886 2 2736 3356

TOKYO

Katsura Yamaguchi
Tel: +81 (0)3 6267 1777

WORLDWIDE SALEROOMS AND OFFICES AND SERVICES

AMERICAS

BOGOTA
+571 635 54 00
Juanita Madrinan
(Consultant)

BUENOS AIRES
+54 11 43 93 42 22
Cristina Carlisle

CHICAGO
+1 312 787 2765
Catherine Busch

DALLAS
+1 214 599 0735
Capera Ryan

HOUSTON
+1 713 802 0191
Jessica Phifer

LOS ANGELES
+1 310 385 2600
Sonya Roth

MEXICO CITY
+52 55 5281 5446
Gabriela Lobo

MIAMI
+1 305 445 1487
Jessica Katz

NEW YORK
+1 212 636 2000

PALM BEACH
+1 561 777 4275
David G. Ober (Consultant)

SAN FRANCISCO
+1 415 982 0982
Ellanor Notides

SANTIAGO
+56 2 2 2631642
Denise Ratinoff de Lira

SÃO PAULO
+55 21 3500 8944
Marina Bertoldi

TORONTO
+1 647 519 0957
Brett Sherlock (Consultant)

ASIA PACIFIC
BANGKOK
+66 (0) 2 252 3685
Prapavadee Sophonpanich

BEIJING
+86 (0)10 8583 1766
Rebecca Yang

HONG KONG
+852 2760 1766

JAKARTA
+62 (0)21 7278 6268
Charmie Hamami

KUALA LUMPUR
+62 (0)21 7278 6268
Charmie Hamami

MUMBAI
+91 (22) 2280 7905
Sonal Singh

SEOUL
+82 2 720 5266
Jun Lee

SHANGHAI
+86 (0)21 6355 1766
Rebecca Yang

SINGAPORE
+65 6715 9358
Kim Chuan Mok

TAIPEI
+886 2 2736 3356
Ada Ong

TOKYO
+81 (0)3 6267 1766
Katsura Yamaguchi

EUROPE, THE MIDDLE EAST AND AFRICA

AMSTERDAM
+31 (0)20 57 55 255
Arno Verkade

BOLOGNA
+39 051 265 154
Benedetta Possati Vittori
Venenti (Consultant)

**BRITTANY, THE LOIRE
VALLEY & NORMANDY**
+33 (0)6 09 44 90 78
Virginie Gregory

BRUSSELS
+32 (0)2 512 88 30
Astrid Centner

CAMBODIA
+66 (0)2 252 3685
Prapavadee Sophonpanich

**CENTRE AUVERGNE
LIMOUSIN & BURGUNDY**
+33 (0)6 10 34 44 35
Marine Desproges-Gotteron

**CENTRAL &
SOUTHERN ITALY**
+39 348 520 2974
Alessandra Allaria (Consultant)

COPENHAGEN
+45 2612 0092
Rikke Juel Brandt (Consultant)

DUBAI
+971 50 723 3274
Meagan Kelly Horsman

DÜSSELDORF
+49 211 491 59322
Gudrun Klemm

FRANKFURT
+49 170 840 7950
Natalie Radziwill

FLORENCE
+39 335 704 8823
Alessandra Niccolini di
Camugliano (Consultant)

GENEVA
+41 (0)22 319 1766
Françoise Adam

HAMBURG
+49 (0)40 27 94 073
Christiane Gräfin
zu Rantzau

IRELAND
+353 (0)87 638 0996
Christine Ryall (Consultant)

ISTANBUL
+90 (532) 558 7514
Eda Kehale Argün
(Consultant)

LAOS
+66 (0)2 252 3685
Prapavadee Sophonpanich

LISBON
+351 919 317 233
Mafalda Pereira Coutinho
(Consultant)

+974 7731 3615
Farah Rahim Ismail
(Consultant)

LONDON
+44 (0)20 7839 9060

MADRID
+34 91 532 66 27
Maria Garcia Yelo

MILAN
+39 02 303 283 1
Cristiano De Lorenzo

MONACO
+377 97 97 11 00
Nancy Dotta

MUNICH
+49 (0)89 24 20 96 80
Marie Christine Gräfin Huyn

MYANMAR
+66 (0)2 252 3685
Prapavadee Sophonpanich

NORTH ITALY
+39 348 3131 021
Paola Gradi (Consultant)

**NORTH OF ENGLAND
AND WALES**
+44 (0)20 7752 3033
Jane Blood

OSLO
+47 949 89 294
Cornelia Svedman (Consultant)

PARIS
+33 (0)1 40 76 85 85

**POITOU CHARENTES
AQUITAINE**
+33 (0)5 56 81 65 47
Marie-Cécile Moueix

**PROVENCE -
ALPES CÔTE D'AZUR**
+33 (0)6 71 99 97 67
Fabienne Albertini-Cohen

ROME
+39 06 686 33 33

SAUDI ARABIA
+44 (0)7904 250666
Zaid Belbagi (Consultant)

SCOTLAND
+44 (0)131 225 4756
Robert Lagneau

STUTTGART
+49 (0)71 12 26 96 99
Eva Susanne Schweizer

TEL AVIV
+972 (0)3 695 0695
Roni Gilat-Baharaff

TURIN
+39 347 2211 541
Chiara Massimello
(Consultant)

VENICE
+39 041 277 0086
Bianca Arrivabene Valenti
Gonzaga (Consultant)

VIENNA
+43 (0)1 533 881214
Angela Baillou

VIETNAM
+66 (0)2 252 3685
Prapavadee Sophonpanich

ZURICH
+41 (0)44 268 1010
Jutta Nixdorf

AUCTION SERVICES

**CHRISTIE'S AUCTION
ESTIMATES**
Tel: +1 212 492 5485
www.christies.com

CORPORATE COLLECTIONS
Tel: +1 212 636 2464
Fax: +1 212 636 4929
Email: gsdlow@christies.com

ESTATES AND APPRAISALS
Tel: +1 212 636 2400
Fax: +1 212 636 2370
Email: info@christies.com

MUSEUM SERVICES
Tel: +1 212 636 2620
Fax: +1 212 636 4931
Email: awhiting@christies.com

OTHER SERVICES

CHRISTIE'S EDUCATION
New York
Tel: +1 212 355 1501
Fax: +1 212 355 7370
Email: newyork@christies.edu

Hong Kong
Tel: +852 2978 6768
Fax: +852 2525 3856
Email: hongkong@christies.edu

London
Tel: +44 (0)20 7665 4350
Fax: +44 (0)20 7665 4351
Email: london@christies.edu

**CHRISTIE'S
INTERNATIONAL
REAL ESTATE**
New York
Tel: +1 212 468 7182
Fax: +1 212 468 7141
Email:
info@christiesrealestate.com

London
Tel: +44 (0)20 7389 2551
Fax: +44 (0)20 7389 2168
Email:
info@christiesrealestate.com

Hong Kong
Tel: +852 2978 6788
Fax: +852 2760 1767
Email:
info@christiesrealestate.com

**CHRISTIE'S FINE ART
STORAGE SERVICES**
New York
Tel: +1 212 974 4579
Email: newyork@cfass.com

CHRISTIE'S REDSTONE
Tel: +1 212 974 4500

• DENOTES SALEROOM

ENQUIRIES?— Call the Saleroom or Office EMAIL— info@christies.com
For a complete salerooms & offices listing go to christies.com

BIDDER REGISTRATION FORM

Christie's Hong Kong Limited

22nd Floor Alexandra House, 18 Chater Road, Central, Hong Kong Tel: +852 2760 1766 www.christies.com

Paddle No.		
------------	--	--

We encourage new clients to register at least 48 hours in advance of a sale to allow sufficient time to process the registration.

Please complete and sign this form, and send it to us by email to registrationasia@christies.com.

A Bidder's Detail

The name and address given above will appear on the invoice for lots purchased with your assigned paddle for this registration. Please check that the details are correct as the invoice cannot be changed after the sale.

Account Name Account No.

Address

Phone No. Would you like to activate your online account? Yes No

Please verify email address for post-sale communication

B Sale Registration

<input type="checkbox"/> 22119 Finest and Rarest Wines <input type="checkbox"/> 22120 Finest and Rarest Wines <input type="checkbox"/> 21723 Handbags and Accessories <input type="checkbox"/> 21019 Important Watches, Featuring The Triazza Collection (II) * <input type="checkbox"/> 22608 The Ultimate Collection <input type="checkbox"/> 22175 Magnificent Jewels <input type="checkbox"/> 21389 20 th and 21 st Century Art Evening Sale * <input type="checkbox"/> 21394 20 th Century Art Day Sale * <input type="checkbox"/> 21390 21 st Century Art Day Sale *	<input type="checkbox"/> 22014 A Connoisseur's studio - The Cissy and Robert Tang Collection of Chinese Classical Furniture * <input type="checkbox"/> 22013 A Heritage of Appreciation: Selected Treasures from the Palmer Family Collection <input type="checkbox"/> 22646 The Imperial Palette - Three Qianlong Treasures * <input type="checkbox"/> 21656 Important Chinese Ceramics and Works of Art * <input type="checkbox"/> 21793 Fine Chinese Modern And Contemporary Ink Paintings * <input type="checkbox"/> 21792 Fine Chinese Classical Paintings & Calligraphy *
--	--

** If you intend to bid on: (i) any lot in the 20th and 21st Century Art Evening Sale; or (ii) a lot the low estimate of which is HK\$ 8 million or above, i.e. a high value lot ("HVL"), please tick the box below.*

I wish to apply for a HVL paddle.

Please indicate the bidding level you require:

<input type="checkbox"/> HK \$ 0 - 500,000	<input type="checkbox"/> HK \$ 500,001 - 2,000,000	<input type="checkbox"/> HK \$ 2,000,001 - 4,000,000
<input type="checkbox"/> HK \$ 4,000,001 - 8,000,000	<input type="checkbox"/> HK \$ 8,000,001 - 20,000,000	<input type="checkbox"/> HK \$ 20,000,000+

C Authorisation

I/We understand that if the Authorised Agent named below is a successful bidder on a lot, I/we will be liable to pay Christie's the purchase price of the lot, including the Buyer's Premium and applicable taxes and other charges, pursuant to the Conditions of Sale set forth in Christie's sale catalogues. I/We understand that Christie's will not accept payment from the Authorised Agent on my/our behalf.

Please provide a copy of the authorised agent's government-issued photo ID (e.g. photo driving license, national identity card or passport).

This authorises the below person to Bid for: All Sales Only Sale No.

Authorised Agent's Name

Authorised Agent's Photo ID

Authorised Agent's Address

Authorised Agent's Phone No. Authorised Agent's Email

D Declarations

- I have read the "Conditions of Sale • Buying at Christie's" and "Important Notices and Explanation of Cataloguing Practice" printed in the sale catalogue, as well as the "No Third Party Payment Notice" and agree to be bound by them.
- I have read the personal information section of the Conditions of Sale printed in the sale catalogue and agree to be bound by its terms.
- I understand that if I have not completed the high value lot pre-registration before the auction Christie's may refuse my bid for high value lots.

Please tick if you are a new client and would like to receive information about sales, events and other services offered by the Christie's group and its affiliates by e-mail. You can opt-out of receiving this information at any time.

Christie's is required by applicable law to do due diligence on the source of funds for the purchase.
 If you are successful, could you please confirm that the funds to pay for the lot(s) will be from you and not anyone else? Yes No

I agree to the above and agree to abide by the Conditions of Sale.

Name Signature Date



現場競拍登記表格

佳士得香港有限公司
香港中環遮打道 18 號歷山大廈 22 樓 電話：+852 2760 1766 www.christies.com

競投牌編號

建議新客戶於拍賣舉行前至少 48 小時辦理登記，以便有充足時間處理登記手續。

請填妥並簽署本表格然後電郵至 registrationasia@christies.com。

A 投標者資料

客戶名稱及地址會列印在附有是次登記之競投牌編號的發票上；付款資料於拍賣會完結後將不能更改，請確定以上資料確實無誤。

客戶名稱 客戶編號

客戶地址

電話號碼 您是否希望啟動您的網上賬戶？ 是 否

請確認電郵地址以作售後服務用途

B 拍賣項目登記

- | | |
|---|---|
| <input type="checkbox"/> 22119 珍罕名釀 | <input type="checkbox"/> 22014 明窗淨几：鄧氏伉儷藏中國古典家具 * |
| <input type="checkbox"/> 22120 珍罕名釀 | <input type="checkbox"/> 22013 博古紹裘 – 帕默家族珍藏 |
| <input type="checkbox"/> 21723 手袋及配飾 | <input type="checkbox"/> 22646 絢彩鬥妍 – 乾隆御瓷三珍 * |
| <input type="checkbox"/> 21019 精緻名錶
特別呈獻：The Triazza Collection (第二部分) * | <input type="checkbox"/> 21656 重要中國瓷器及工藝精品 * |
| <input type="checkbox"/> 22608 極致系列 | <input type="checkbox"/> 21793 中國近現代及當代書畫 * |
| <input type="checkbox"/> 22175 瑰麗珠寶及翡翠首飾 | <input type="checkbox"/> 21792 中國古代書畫 * |
| <input type="checkbox"/> 21389 二十及二十一世紀藝術 晚間拍賣 * | |
| <input type="checkbox"/> 21394 二十世紀藝術 日間拍賣 * | |
| <input type="checkbox"/> 21390 二十一世紀藝術 日間拍賣 * | |

* 如閣下有意競投 (i) 佳士得二十及二十一世紀藝術晚間拍賣之任何拍賣品；或 (ii) 其他類別拍賣低估價為港幣 8,000,000 元或以上的拍賣品，即高價拍品，請於以下方格劃上「✓」號。

本人有意登記高價拍品競投牌。

請提供閣下之競投總額：

- | | | |
|---|--|---|
| <input type="checkbox"/> 港幣 0 - 500,000 | <input type="checkbox"/> 港幣 500,001 - 2,000,000 | <input type="checkbox"/> 港幣 2,000,001 - 4,000,000 |
| <input type="checkbox"/> 港幣 4,000,001 - 8,000,000 | <input type="checkbox"/> 港幣 8,000,001 - 20,000,000 | <input type="checkbox"/> 港幣 20,000,000+ |

C 委託授權書

本人 / 我們明白若上述被授權代理人成功競得拍賣品，本人 / 我們將有責任按佳士得目錄所載業務規定支付拍賣品的購買款項，包括買方酬金及任何適用的稅費及其他費用。本人 / 我們明白佳士得將不會接受由被授權代理人代本人 / 我們作出付款。

請提供被授權代理人由政府發出附有相片的身分證明文件（如附有照片的駕駛執照、國民身分證或護照）。

現授權以下人士於指定拍賣場次代為競投： 所有拍賣場次 僅限於拍場編號

被授權代理人姓名

被授權代理人身分證明文件編號

被授權代理人住址

被授權代理人電話 被授權代理人電郵

D 聲明

- 本人已細閱載於目錄內之末的業務規定、買家須知、重要通告及目錄編列方法之說明及不接受第三方支付款通告，並同意遵守所有規定。
- 本人已細閱載於目錄內業務規定之個人信息條款，並同意遵守該規定。
- 本人知悉若本人未於拍賣前完成高價拍賣預先登記，佳士得將有權不接受任何高價拍品之競投。

如閣下為新客戶並希望透過電郵接收本公司將舉行的拍賣、活動或其他由佳士得集團及其聯營公司提供的服務資料，請於方格內劃上「✓」號。閣下可隨時選擇拒收此訊息。

根據相關法例，佳士得必須對購買資金的來源進行盡責調查。如您是成功競投人，您的購買資金是否由本人而非他人提供？ 是 否

本人同意以上各項並同意遵守業務規定所列之條款。

姓名 簽署 日期



CHRISTIE'S

CHRISTIE'S INTERNATIONAL PLC

François Pinault, Chairman
Guillaume Cerutti, Chief Executive Officer
Jussi Pylikkänen, Global President
François Curiel, Honorary Adviser; Chairman, Europe
Benjamin Gore, Chief Operating Officer
Jean-François Palus
Héloïse Temple-Boyer
Sophie Carter, Company Secretary

INTERNATIONAL CHAIRMEN

Stephen Lash, Chairman Emeritus, Americas
The Earl of Snowdon, Honorary Chairman, EMEA
Charles Cator, Deputy Chairman, Christie's Int.
Xin Li-Cohen, Deputy Chairman, Christie's Int.

CHRISTIE'S ASIA PACIFIC

Francis Belin, President
Audrey Shum, Managing Director, Asia Pacific
Rebecca Yang, Chairman, China
Heidi Yang, Global Managing Director, Asian and World Art

CHAIRMAN'S OFFICE

Jonathan Stone, Senior Advisor
Cristian Albu, Deputy Chairman
Pola Antebi, Deputy Chairman
Eric Chang, Deputy Chairman
Charmie Hamami, Deputy Chairman
Elaine Holt, Deputy Chairman
Evelyn Lin, Deputy Chairman
Ada Ong, Deputy Chairman
Vickie Sek, Deputy Chairman
Chi Fan Tsang, Deputy Chairman

SENIOR VICE PRESIDENTS

Marco Almeida, Karen Au-Yeung,
Alexandre Bigler, Adam Bilbey,
Linda Chan, Jacky Ho, Lillian Ng,
Jasmin Ngai, Audrey Shum, Bo Tan,
Nicole Wright, Katsura Yamaguchi, Kim Yu

VICE PRESIDENTS

Carmen Shek Cerne, Michelle Chan, Janet Chang,
Liang-Lin Chen, Isaac Choi, Betsy Chow,
Georgina Hilton, Seiji Inami, Wei-Ting Jud,
Yunah Jung, Michelle Kim, Hak Jun Lee,
Stephenie Leung, Ruben Lien, Gabrielle Mak,
Sara Mao, Tony Ng, Edward Ngan,
Jessie Or, Jing Jing Qiao, Sonal Singh,
Prapadavee Sophonpanich, CY Tang, Winsy Tsang,
Ada Tsui, Michael Xie, Maxwell Yao,
Phoebe Yeung, Alan Yip, Harriet Yu,
Dina Zhang, Mia Zhang, Grace Zhuang

ASSOCIATE VICE PRESIDENTS

Emmanuelle Chan, Nga Lam Chan, Jerry Chang,
Kelly Chang, Lesley Chen, Amy Cheng,
Henry Cheng, Joanne Cheng, Terry Choi,
Yanie Choi, Simon Chow, Dai Dai,
Helen Fung, Gigi Ho, Phylbie Ho,
Ronny Hsu, Yiwen Huang, Chie Kawasaki,
Masahiko Kuze, Rosita Kwong, Anita Lam,
Annie Lee, Kevyn Leung, Caroline Liang,
Faye Liu, Louis Lin, Vicky Liu,
Fai Lo, Yu-Shan Lu, Cissy Ngan,
Benson Or, Stephanie Pang, Felix Pei,
Thomas Portolano, Zhongwei Qin, Joe So,
Yorkie Tam, Sherese Tong, Mandy Wang,
Aaron Wong, Harmond Wong, Frank Yang

13/04/2023

HONG KONG AUCTION CALENDAR

FINEST AND RAREST WINES

Sale number: 22119
WEDNESDAY 24 MAY

FINEST AND RAREST WINES

Sale number: 22120
THURSDAY 24 MAY

HANDBAGS AND ACCESSORIES

Sale number: 21723
THURSDAY 25 MAY
2.00 PM
Viewing: 24-25 May

IMPORTANT WATCHES, FEATURING THE TRIAZZA COLLECTION (II)

Sale number: 21019
FRIDAY 26 MAY
1.00 PM
SUNDAY 28 MAY
7.00 PM
Viewing: 24-26 May

THE ULTIMATE COLLECTION

Sale number: 22608
FRIDAY 26 MAY
6.00 PM
Viewing: 24-26 May

MAGNIFICENT JEWELS

Sale number: 22175
SATURDAY 27 MAY
2.00 PM
Viewing: 25-27 May

20TH / 21ST CENTURY ART EVENING SALE

Sale number: 21389
SUNDAY 28 MAY
Viewing: 25-28 May

20TH CENTURY ART DAY SALE

Sale number: 21394
MONDAY 29 MAY
Viewing: 25-28 May

21ST CENTURY ART DAY SALE

Sale number: 21390
MONDAY 29 MAY
Viewing: 25-28 May

A CONNOISSEUR'S STUDIO- THE CISSY AND ROBERT TANG COLLECTION OF CHINESE CLASSICAL FURNITURE

Sale number: 22014
TUESDAY 30 MAY
10.30 AM
Viewing: 25-29 May

A HERITAGE OF APPRECIATION: SELECTED TREASURES FROM THE PALMER FAMILY COLLECTION

Sale number: 22013
TUESDAY 30 MAY
11.00 AM
Viewing: 25-29 May

THE IMPERIAL PALETTE- THREE QIANLONG TREASURES

Sale number: 22646
TUESDAY 30 MAY
2.30 PM
Viewing: 25-29 May

IMPORTANT CHINESE CERAMICS AND WORKS OF ART

Sale number: 21656
TUESDAY 30 MAY
2.45 PM
Viewing: 25-29 May

FINE CHINESE MODERN AND CONTEMPORARY INK PAINTINGS

Sale number: 21793
WEDNESDAY 31 MAY
10.30AM & 2:30PM
Viewing: 25-30 May

FINE CHINESE CLASSICAL PAINTINGS & CALLIGRAPHY

Sale number: 21792
THURSDAY 1 JUNE
10.30 AM
Viewing: 25-31 May

24/04/2023







CHRISTIE'S 佳士得

22ND FLOOR ALEXANDRA HOUSE 18 CHATER ROAD CENTRAL HONG KONG
香港 中環 遮打道18號 歷山大廈22樓